

December 31, 2021

**▶ NIFTY: 17205**

Range : 17145-17265

Resistance: 17275-17325-17375-17415

Support : 17150-17100-17065-17000

**▶ Simple Moving Average (SMA)**

20 Days	50 Days	200 Days
17155	17535	16337

**▶ BANK NIFTY: 35063**

Range : 34750-35200

Resistance: 35200-35400-35600-35700

Support : 34800-34600-34200-34000

**▶ Simple Moving Average (SMA)**

20 Days	50 Days	200 Days
35867	37515	35704

**▶ Nifty Short Term Trend**

Down (Up above 17500 on a closing basis)

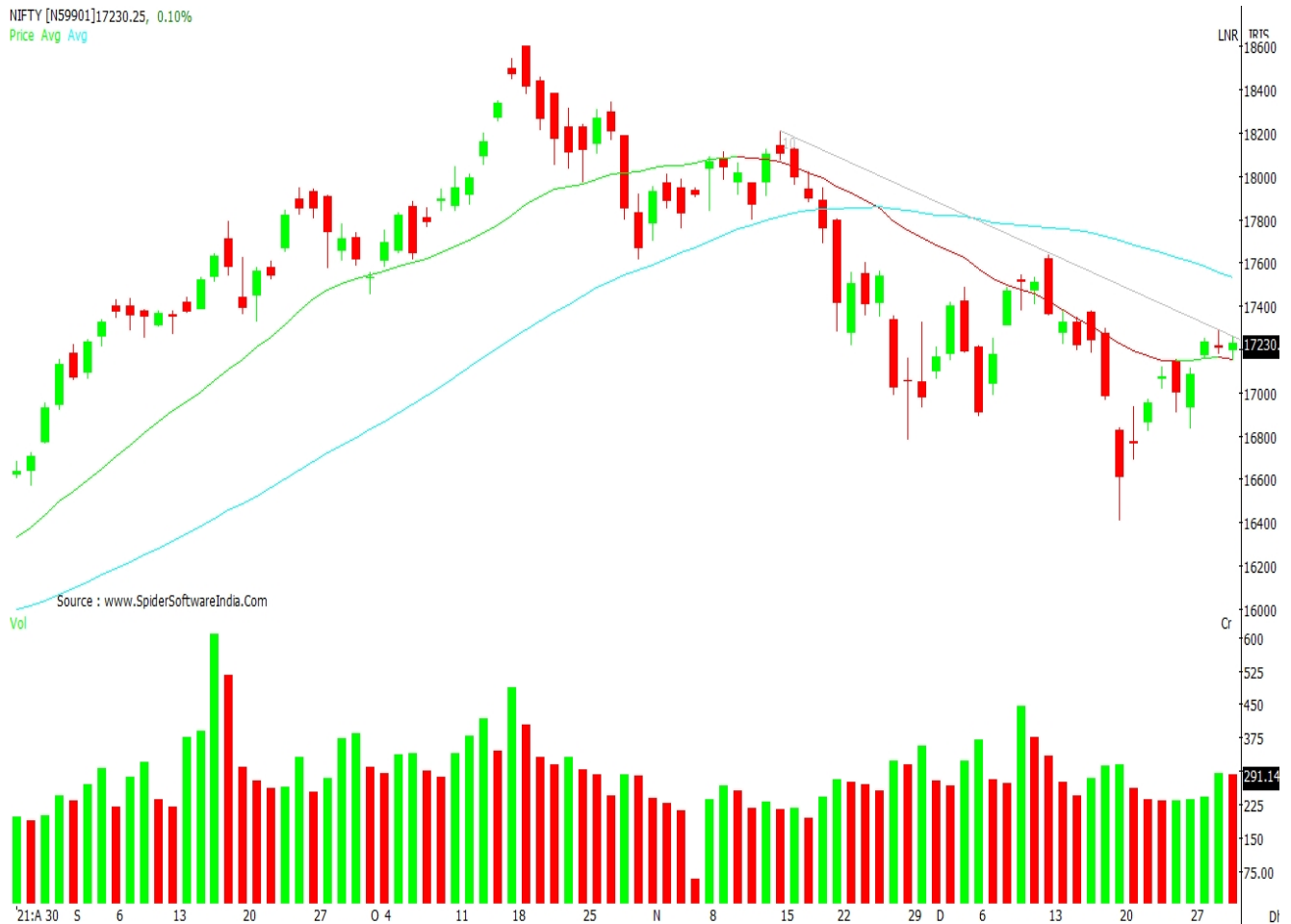
**▶ Nifty Medium Term Trend**

Up (Down below 14100 on a closing basis)

**▶ Nifty Long Term Trend**

Up (Down below 7500) on a weekly closing basis)

Blue color: means heading upward as compare to previous close. Red color: means sloping downward as compare to previous close.

**Nifty Daily Chart: 20 Day and 50 Day SMA**


## ▶ Market Analysis

**Nifty/Sensex Daily View:** The benchmark indices continued narrow range activity, on Thursday, after a muted opening entire day the nifty travelled between 17150 to 17250 price ranges.

It made couple of attempts to hold on the higher terrain, which is 17250 but due to lack of follow through buying interest it failed. Among sectors, buying interest was seen in IT and Pharma stocks whereas, Energy and Metal stocks registered technical sell off.

Technically, currently, near 20 day SMA the stock is witnessing non directional activity perhaps, traders are waiting for the either side breakout. For the bulls, 17275/58000 would be the important breakout level to watch. And if, the Nifty/Sensex manages to trade above the same, we can expect quick uptrend rally towards 17325-17375/58200-58350. On the flip side, trading below 17150/57700 may increase further weakness up to 17100-17065/57500-57350.

---

### RATING SCALE (PRIVATE CLIENT GROUP)

- BUY** – A condition that indicates a good time to buy a stock. The exact circumstances of the signal will be determined by the indicator that an analyst is using.
- SELL** – A condition that indicates a good time to sell a stock. The exact circumstances of the signal will be determined by the indicator that an analyst is using.
- Stop Loss Order** – An instruction to the broker to buy or sell stock when it trades beyond a specified price. They serve to either protect your profits or limit your losses.

---

### FUNDAMENTAL RESEARCH TEAM (PRIVATE CLIENT GROUP)

<p><b>Shrikant Chouhan</b> Head of Research shrikant.chouhan@kotak.com +91 22 6218 5408</p>	<p><b>Arun Agarwal</b> Auto &amp; Auto Ancillary arun.agarwal@kotak.com +91 22 6218 6443</p>	<p><b>Amit Agarwal, CFA</b> Transportation, Paints, FMCG agarwal.amit@kotak.com +91 22 6218 6439</p>	<p><b>Hemali Dhame</b> Banking &amp; Finance Hemali.Dhame@kotak.com +91 22 6218 6433</p>
<p><b>Jatin Damania</b> Metals &amp; Mining, Midcap jatin.damania@kotak.com +91 22 6218 6440</p>	<p><b>Purvi Shah</b> Pharmaceuticals purvi.shah@kotak.com +91 22 6218 6432</p>	<p><b>Rini Mehta</b> Research Associate rini.mehta@kotak.com +91 80801 97299</p>	<p><b>K. Kathirvelu</b> Support Executive k.kathirvelu@kotak.com +91 22 6218 6427</p>
<p><b>Sumit Pokharna</b> Oil and Gas, Information Tech sumit.pokharna@kotak.com +91 22 6218 6438</p>	<p><b>Pankaj Kumar</b> Midcap pankajr.kumar@kotak.com +91 22 6218 6434</p>		

---

### TECHNICAL RESEARCH TEAM (PRIVATE CLIENT GROUP)

<p><b>Shrikant Chouhan</b> shrikant.chouhan@kotak.com +91 22 6218 5408</p>	<p><b>Amol Athawale</b> amol.athawale@kotak.com +91 20 6620 3350</p>	<p><b>Sayed Haider</b> Research Associate sayed.haider@kotak.com +91 22 62185498</p>
--	--	--

---

### DERIVATIVES RESEARCH TEAM (PRIVATE CLIENT GROUP)

<p><b>Sahaj Agrawal</b> sahaj.agrawal@kotak.com +91 79 6607 2231</p>	<p><b>Prashanth Lalu</b> prashanth.lalu@kotak.com +91 22 6218 5497</p>	<p><b>Prasenjit Biswas, CMT, CFTE</b> prasenjit.biswas@kotak.com +91 33 6615 6273</p>
--	--	---

**Disclosure/Disclaimer (Private Client Group)**

Kotak Securities Limited established in 1994, is a subsidiary of Kotak Mahindra Bank Limited. Kotak Securities is one of India's largest brokerage and distribution house.

Kotak Securities Limited is a corporate trading and clearing member of BSE Limited (BSE), National Stock Exchange of India Limited (NSE), Metropolitan Stock Exchange of India Limited (MSE), National Commodity and Derivatives Exchange (NCDEX) and Multi Commodity Exchange (MCX). Our businesses include stock broking, services rendered in connection with distribution of primary market issues and financial products like mutual funds and fixed deposits, depository services and Portfolio Management.

Kotak Securities Limited is also a depository participant with National Securities Depository Limited (NSDL) and Central Depository Services (India) Limited (CDSL). Kotak Securities Limited is also registered with Insurance Regulatory and Development Authority as Corporate Agent for Kotak Mahindra Old Mutual Life Insurance Limited and is also a Mutual Fund Advisor registered with Association of Mutual Funds in India (AMFI). We are registered as a Research Analyst under SEBI (Research Analyst) Regulations, 2014.

We hereby declare that our activities were neither suspended nor we have defaulted with any stock exchange authority with whom we are registered in last five years. However SEBI, Exchanges and Depositories have conducted the routine inspection and based on their observations have issued advise/warning/deficiency letters/ or levied minor penalty on KSL for certain operational deviations. We have not been debarred from doing business by any Stock Exchange / SEBI or any other authorities; nor has our certificate of registration been cancelled by SEBI at any point of time.

We offer our research services to clients as well as our prospects.

This document is not for public distribution and has been furnished to you solely for your information and must not be reproduced or redistributed to any other person. Persons into whose possession this document may come are required to observe these restrictions.

This material is for the personal information of the authorized recipient, and we are not soliciting any action based upon it. This report is not to be construed as an offer to sell or the solicitation of an offer to buy any security in any jurisdiction where such an offer or solicitation would be illegal. It is for the general information of clients of Kotak Securities Ltd. It does not constitute a personal recommendation or take into account the particular investment objectives, financial situations, or needs of individual clients.

We have reviewed the report, and in so far as it includes current or historical information, it is believed to be reliable though its accuracy or completeness cannot be guaranteed. Neither Kotak Securities Limited, nor any person connected with it, accepts any liability arising from the use of this document. The recipients of this material should rely on their own investigations and take their own professional advice. Price and value of the investments referred to in this material may go up or down. Past performance is not a guide for future performance. Certain transactions -including those involving futures, options and other derivatives as well as non-investment grade securities - involve substantial risk and are not suitable for all investors. Reports based on technical analysis centers on studying charts of a stock's price movement and trading volume, as opposed to focusing on a company's fundamentals and as such, may not match with a report on a company's fundamentals.

Opinions expressed are our current opinions as of the date appearing on this material only. While we endeavor to update on a reasonable basis the information discussed in this material, there may be regulatory, compliance or other reasons that prevent us from doing so. Prospective investors and others are cautioned that any forward-looking statements are not predictions and may be subject to change without notice. Our proprietary trading and investment businesses may make investment decisions that are inconsistent with the recommendations expressed herein.

Kotak Securities Limited has two independent equity research groups: Institutional Equities and Private Client Group. This report has been prepared by the Private Client Group.

We and our affiliates/associates, officers, directors, and employees, Research Analyst(including relatives) worldwide may: (a) from time to time, have long or short positions in, and buy or sell the securities thereof, of company (ies) mentioned herein or (b) be engaged in any other transaction involving such securities and earn brokerage or other compensation or act as a market maker in the financial instruments of the subject company/company (ies) discussed herein or act as advisor or lender / borrower to such company (ies) or have other potential/material conflict of interest with respect to any recommendation and related information and opinions at the time of publication of Research Report or at the time of public appearance. Kotak Securities Limited (KSL) may have proprietary long/short position in the above mentioned scrip(s) and therefore may be considered as interested. The views provided herein are general in nature and does not consider risk appetite or investment objective of particular investor; readers are requested to take independent professional advice before investing. This should not be construed as invitation or solicitation to do business with KSL. Kotak Securities Limited is also a Portfolio Manager. Portfolio Management Team (PMS) takes its investment decisions independent of the PCG research and accordingly PMS may have positions contrary to the PCG research recommendation. Kotak Securities Limited does not provide any promise or assurance of favourable view for a particular industry or sector or business group in any manner. The investor is requested to take into consideration all the risk factors including their financial condition, suitability to risk return profile and take professional advice before investing. The analyst for this report certifies that all of the views expressed in this report accurately reflect his or her personal views about the subject company or companies and its or their securities, and no part of his or her compensation was, is or will be, directly or indirectly related to specific recommendations or views expressed in this report.

No part of this material may be duplicated in any form and/or redistributed without Kotak Securities' prior written consent.

Details of Associates are available on [www.kotak.com](http://www.kotak.com)

1. "Note that the research analysts contributing to the research report may not be registered/qualified as research analysts with FINRA; and

2. Such research analysts may not be associated persons of Kotak Mahindra Inc and therefore, may not be subject to NASD Rule 2711 restrictions on communications with a subject company, public appearances and trading securities held by a research analyst account

Any U.S. recipients of the research who wish to effect transactions in any security covered by the report should do so with or through Kotak Mahindra Inc. (Member FINRA/SIPC) and (ii) any transactions in the securities covered by the research by U.S. recipients must be effected only through Kotak Mahindra Inc. (Member FINRA/SIPC) at 369 Lexington Avenue 28th Floor NY NY 10017 USA (Tel:+1 212-600-8850).

Kotak Securities Limited and its non US affiliates may, to the extent permissible under applicable laws, have acted on or used this research to the extent that it relates to non US issuers, prior to or immediately following its publication. This material should not be construed as an offer to sell or the solicitation of an offer to buy any security in any jurisdiction where such an offer or solicitation would be illegal. This research report and its respective contents do not constitute an offer or invitation to purchase or subscribe for any securities or solicitation of any investments or investment services. Accordingly, any brokerage and investment services including the products and services described are not available to or intended for Canadian persons or US persons."

Research Analyst has served as an officer, director or employee of subject company(ies): No

We or our associates may have received compensation from the subject company(ies) in the past 12 months.

We or our associates have managed or co-managed public offering of securities for the subject company(ies) in the past 12 months: No

We or our associates may have received compensation for investment banking or merchant banking or brokerage services from the subject company(ies) in the past 12 months. We or our associates may have received any compensation for products or services other than investment banking or merchant banking or brokerage services from the subject company(ies) in the past 12 months. We or our associates may have received compensation or other benefits from the subject company(ies) or third party in connection with the research report. Our associates may have financial interest in the subject company(ies).

Research Analyst or his/her relative's financial interest in the subject company(ies): No

Kotak Securities Limited has financial interest in the subject company(ies) at the end of the month immediately preceding the date of publication of Research Report: No

"However, Kotak Securities Prop/Arbitrage team could have exposure/financial interest to the subject company/companies during the ongoing month."

Nature of financial interest is holding of equity shares or derivatives of the subject company.

Our associates may have actual/beneficial ownership of 1% or more securities of the subject company(ies) at the end of the month immediately preceding the date of publication of Research Report.

Research Analyst or his/her relatives has actual/beneficial ownership of 1% or more securities of the subject company(ies) at the end of the month immediately preceding the date of publication of Research Report: No

Kotak Securities Limited has actual/beneficial ownership of 1% or more securities of the subject company(ies) at the end of the month immediately preceding the date of publication of Research Report: No

Subject company(ies) may have been client during twelve months preceding the date of distribution of the research report.

"A graph of daily closing prices of securities is available at <https://www.nseindia.com/ChartApp/install/charts/mainpage.jsp> and <http://economictimes.indiatimes.com/markets/stocks/stock-quotes>. (Choose a company from the list on the browser and select the "three years" icon in the price chart)."

Kotak Securities Limited. Registered Office: 27 BKC, C 27, G Block, Bandra Kurla Complex, Bandra (E), Mumbai 400051. CIN: U99999MH1994PLC134051, Telephone No.: +22 43360000, Fax No.: +22 67132430. Website: [www.kotak.com/www.kotaksecurities.com](http://www.kotak.com/www.kotaksecurities.com). Correspondence Address: Infinity IT Park, Bldg. No 21, Opp. Film City Road, A K Vaidya Marg, Malad (East), Mumbai 400097. Telephone No: 42856825. SEBI Registration No: INZ000200137 (Member ID: NSE-08081; BSE-673; MSE-1024; MCX-56285; NCDEX-1262), AMFI ARN 0164, PMS INP000000258 and Research Analyst INH000000586. NSDL/CDSL: IN-DP-NSDL-23-97. Our research should not be considered as an advertisement or advice, professional or otherwise. The investor is requested to take into consideration all the risk factors including their financial condition, suitability to risk return profile and the like and take professional advice before investing. Investments in securities market are subject to market risks, read all the related documents carefully before investing. Derivatives are a sophisticated investment device. The investor is requested to take into consideration all the risk factors before actually trading in derivative contracts. Compliance Officer Details: Mr. Manoj Agarwal. Call: 022 - 4285 8484, or Email: [ks.compliance@kotak.com](mailto:ks.compliance@kotak.com).

In case you require any clarification or have any concern, kindly write to us at below email ids:

- **Level 1:** For Trading related queries, contact our customer service at 'service.securities@kotak.com' and for demat account related queries contact us at [ks.demat@kotak.com](mailto:ks.demat@kotak.com) or call us on: Toll free numbers 18002099191 / 1860 266 9191
- **Level 2:** If you do not receive a satisfactory response at Level 1 within 3 working days, you may write to us at [ks.escalation@kotak.com](mailto:ks.escalation@kotak.com) or call us on 022-42858445 and if you feel you are still unheard, write to our customer service HOD at [ks.servicehead@kotak.com](mailto:ks.servicehead@kotak.com) or call us on 022-42858208.
- **Level 3:** If you still have not received a satisfactory response at Level 2 within 3 working days, you may contact our Compliance Officer (Name: Manoj Agarwal) at [ks.compliance@kotak.com](mailto:ks.compliance@kotak.com) or call on 91-(022) 4285 8484.
- **Level 4:** If you have not received a satisfactory response at Level 3 within 7 working days, you may also approach Managing Director / CEO (Mr. Jaideep Hansraj) at [ceo.ks@kotak.com](mailto:ceo.ks@kotak.com) or call on 91-(022) 4285 8301.