

Sahaj Agrawal
sahaj.agrawal@kotak.com
+91 79 6607 2231

Prashanth Lalu
prashanth.lalu@kotak.com
+91 22 6218 5497

Prasenjit Biswas, CMT, CFTe
prasenjit.biswas@kotak.com
+91 33 6615 6273

NIFTY DERIVATIVE SNAPSHOT FOR CURRENT SERIES

	NIFTY FUTURE	OI (NO OF SHARES OUTSTANDING)	VOLUME (NO OF SHARES TRADED)	BASIS (Rs)	PCR OI	TREND
CURRENT	16,620	77,68,750	61,58,950	-3.75	1.28	16030
PREVIOUS	16,494	96,24,450	73,81,500	-1.75	0.98	
% CHANGE	0.76%	-19.28%	-16.56%	-		

OUTLOOK

Nifty

- Nifty opened gap-up and continued to gain in the second half of the trading session.
- Nifty added 128 points to close at 16624.
- OI concentration seen in 16800CE and 16000PE.
- Addition witnessed in 16600PE and Reduction in 16500CE.
- PCR OI stands at 1.28 compared to 0.98 in the previous trading session.
- Nifty to trade with a support of 16030.

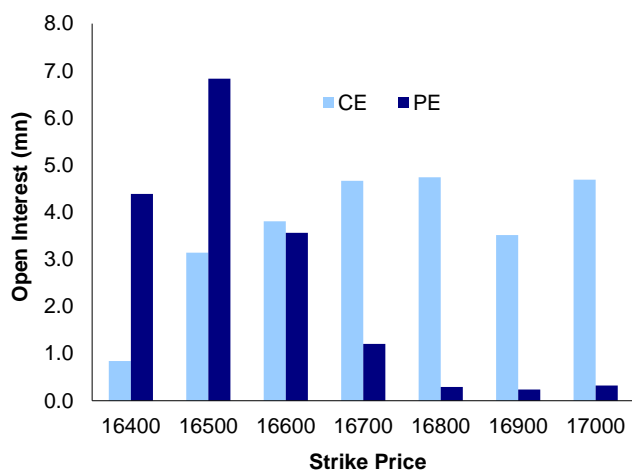
NIFTY LEVELS

16030 16148 16271 16422 16535 16730

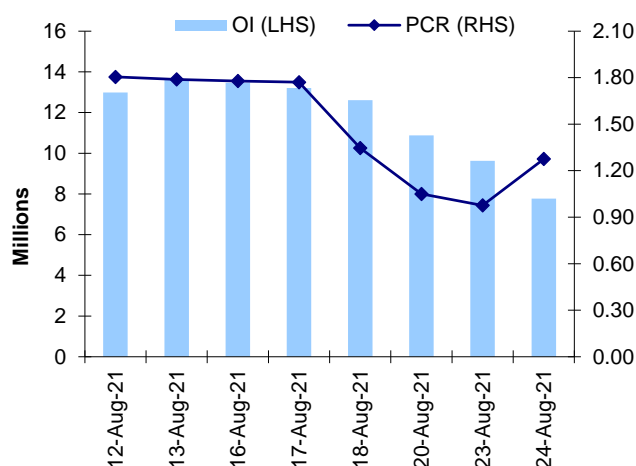
Stocks

- **Sector:-** Banking stocks traded positive.
- Market wide-open interest is 847,417Cr.

NIFTY OPTIONS OI



NIFTY PCR OI



FUTURE STATISTICS

OI INCREASE

SYMBOL	OI (%)	OI (SHARES)	PRICE CHG (%)
NATIONALUM	22.1%	10,15,75,000	7.6%
AUBANK	19.6%	24,51,500	5.1%
BAJAJFINSV	15.6%	10,10,175	7.8%
NAUKRI	11.9%	10,77,750	4.9%
ASTRAL	11.8%	3,63,550	-2.3%
ESCORTS	7.5%	65,05,950	3.1%
SBILIFE	7.2%	90,24,000	2.2%
TECHM	6.7%	1,14,78,000	3.3%
UBL	6.4%	18,15,100	-0.4%
BANDHANBNK	5.8%	3,15,10,800	-0.7%

OI DECREASE

SYMBOL	OI (%)	OI (SHARES)	PRICE CHG (%)
PFIZER	-10.8%	2,46,750	1.7%
L&TFH	-10.4%	6,73,85,124	3.3%
TVSMOTOR	-9.8%	68,64,200	1.3%
MANAPPURAM	-9.8%	2,66,16,000	3.2%
IDFCFIRSTB	-9.6%	21,41,68,000	4.8%
MGL	-9.3%	18,64,800	3.3%
TRENT	-9.2%	12,22,350	1.9%
RBLBANK	-8.6%	3,84,80,100	3.0%
LALPATHLAB	-8.3%	4,94,250	0.5%
PFC	-7.8%	3,08,51,200	1.7%

CASH STATISTICS

TOP VOLUMES

SYMBOL	TRADED SHARES (QTY)	VALUE (IN LAKHS)	CLOSE
TATASTEEL	1,76,07,579	2,46,468	1,405
HDFCBANK	91,90,657	1,42,472	1,559
RELIANCE	54,75,452	1,19,052	2,184
TATAMOTORS	3,75,89,121	1,03,522	280
TCS	25,11,141	91,067	3,613
HDFC	29,84,595	80,430	2,691
KOTAKBANK	47,07,971	80,252	1,705
SBIN	1,90,12,313	78,919	418
TECHM	53,66,923	77,817	1,463

OPTION STATISTICS

SIGNIFICANT CALL OPEN INTEREST

SYMBOL	STRK PRICE	OPTION TYPE	CLOSE (RS)	FUT CLOSE	OI (SHARES)
M&M	800	CE	0.6	778	32,90,000
M&M	780	CE	3.3	778	28,53,200
SUNPHARMA	800	CE	0.4	772	60,10,200
M&M	790	CE	1.5	778	20,67,800
AXISBANK	760	CE	1.1	747	41,53,200
BAJAJ-AUTO	3,900	CE	3.2	3,710	3,01,000
ITC	220	CE	0.1	206	295,23,200
RELIANCE	2,200	CE	8.3	2,181	38,47,750
EICHERMOT	2,700	CE	3.2	2,537	3,96,900
EICHERMOT	2,600	CE	9.3	2,537	3,71,000

SIGNIFICANT PUT OPEN INTEREST

SYMBOL	STRK PRICE	OPTION TYPE	CLOSE (RS)	FUT CLOSE	OI (SHARES)
INDUSINDBK	1,000	PE	5.8	1,005	8,51,400
MARUTI	6,500	PE	4.3	6,809	1,47,400
BHARTIARTL	600	PE	0.7	620	42,64,704
TCS	3,500	PE	3.7	3,613	4,71,900
HDFCBANK	1,500	PE	0.9	1,555	13,48,050
ASIANPAINT	3,000	PE	4.2	3,051	1,71,000
HDFCBANK	1,520	PE	1.5	1,555	11,60,500
RELIANCE	2,100	PE	0.9	2,181	12,88,250
HINDALCO	400	PE	0.8	421	18,68,350
HDFCBANK	1,540	PE	5.0	1,555	9,91,650

SIGNIFICANT CALL OPEN INTEREST ADDITION

SYMBOL	STRK PRICE	OPTION TYPE	OPEN INT	OI CHG (%)	CLOSE (Rs)
NATIONALUM	81	CE	9,86,000	5700%	1.0
NATIONALUM	82	CE	10,20,000	900%	0.8
STAR	600	CE	1,06,650	532%	8.5
PNB	36	CE	7,36,000	411%	0.7
VEDL	290	CE	18,81,700	302%	3.2
TATAMOTORS	270	CE	5,04,450	277%	11.1
VEDL	285	CE	6,16,900	237%	5.1
NATIONALUM	80	CE	23,46,000	207%	1.5
PNB	37	CE	30,40,000	206%	0.3
DEEPAKNTR	2,140	CE	2,64,000	160%	13.7

SIGNIFICANT PUT OPEN INTEREST ADDITION

SYMBOL	STRK PRICE	OPTION TYPE	OPEN INT	OI CHG (%)	CLOSE (Rs)
MANAPPURAM	142	PE	1,26,000	2000%	0.7
NATIONALUM	79	PE	3,40,000	1900%	0.9
BAJFINANCE	7,000	PE	1,16,500	1883%	94.8
TECHM	1,460	PE	1,58,400	1048%	13.2
NATIONALUM	78	PE	4,93,000	625%	0.6
CADILAHC	535	PE	1,14,400	478%	2.3
SBILIFE	1,140	PE	1,47,000	345%	2.4
HDFCBANK	1,560	PE	6,75,950	283%	13.4
TECHM	1,440	PE	2,63,400	282%	6.5
VEDL	275	PE	8,86,600	276%	1.4

CALL OPTION VOLUMES

SYMBOL	STRK PRICE	OPTION TYPE	CONTRACTS	CLOSE (Rs)
BAJFINANCE	7,000	CE	59,655	71.6
RELIANCE	2,200	CE	43,513	8.3
TATASTEEL	1,400	CE	40,201	18.1
BAJFINANCE	7,100	CE	36,561	42.1
BAJFINANCE	6,900	CE	34,483	125.3
HDFCBANK	1,560	CE	33,339	8.1
TATASTEEL	1,420	CE	32,312	10.8
RELIANCE	2,180	CE	32,025	13.7
SBIN	430	CE	31,512	1.2
BAJAJFINSV	16,500	CE	31,295	224.1

PUT OPTION VOLUMES

SYMBOL	STRK PRICE	OPTION TYPE	CONTRACTS	CLOSE (Rs)
BAJFINANCE	6,700	PE	17,868	16.8
RELIANCE	2,160	PE	17,462	5.2
BAJFINANCE	6,800	PE	15,810	27.5
TATASTEEL	1,380	PE	11,786	8.3
BAJFINANCE	6,600	PE	11,758	11.6
SBIN	410	PE	11,715	1.3
TATASTEEL	1,400	PE	11,593	15.7
RELIANCE	2,140	PE	11,299	2.1
BAJFINANCE	6,900	PE	11,214	49.2
TATASTEEL	1,360	PE	10,901	4.5

RATING SCALE (PRIVATE CLIENT GROUP)

- BUY** – Stock/Index looks strong from the expiry/near term perspective and is expected to gain on the basis of technical and/or derivative parameters. Time frame is minimum of current expiry and in certain cases extend to the next series depending on the stock behaviour. Strict stop loss needs to be adhered to for every buy/long recommendation given.
- SELL** – Stock/Index looks weak from the expiry/near term perspective and is expected to gain on the basis of technical and/or derivative parameters. Time frame is minimum of current expiry and in certain cases extend to the next series depending on the stock behaviour. Strict stop loss needs to be adhered to for every sell/short recommendation given.

FUNDAMENTAL RESEARCH TEAM (PRIVATE CLIENT GROUP)

Rusmik Oza Head of Research rusmik.oza@kotak.com +91 22 6218 6441	Arun Agarwal Auto & Auto Ancillary arun.agarwal@kotak.com +91 22 6218 6443	Amit Agarwal, CFA Transportation, Paints, FMCG agarwal.amit@kotak.com +91 22 6218 6439	Hemali Dhame Banking & Finance Hemali.Dhame@kotak.com +91 22 6218 6433
Jatin Damania Metals & Mining, Midcap jatin.damania@kotak.com +91 22 6218 6440	Purvi Shah Pharmaceuticals purvi.shah@kotak.com +91 22 6218 6432	Rini Mehta Research Associate rini.mehta@kotak.com +91 80801 97299	K. Kathirvelu Support Executive k.kathirvelu@kotak.com +91 22 6218 6427
Sumit Pokharna Oil and Gas, Information Tech sumit.pokharna@kotak.com +91 22 6218 6438	Pankaj Kumar Midcap pankajr.kumar@kotak.com +91 22 6218 6434		

TECHNICAL RESEARCH TEAM (PRIVATE CLIENT GROUP)

Shrikant Chouhan shrikant.chouhan@kotak.com +91 22 6218 5408	Amol Athawale amol.athawale@kotak.com +91 20 6620 3350	Sayed Haider Research Associate sayed.haider@kotak.com +91 22 62185498
---	---	--

DERIVATIVES RESEARCH TEAM (PRIVATE CLIENT GROUP)

Sahaj Agrawal sahaj.agrawal@kotak.com +91 79 6607 2231	Prashanth Lalu prashanth.lalu@kotak.com +91 22 6218 5497	Prasenjit Biswas, CMT, CFTe prasenjit.biswas@kotak.com +91 33 6615 6273
---	---	--

Disclosure/Disclaimer (Private Client Group)

Kotak Securities Limited established in 1994, is a subsidiary of Kotak Mahindra Bank Limited. Kotak Securities is one of India's largest brokerage and distribution house.

Kotak Securities Limited is a corporate trading and clearing member of BSE Limited (BSE), National Stock Exchange of India Limited (NSE), Metropolitan Stock Exchange of India Limited (MSE), National Commodity and Derivatives Exchange (NCDEX) and Multi Commodity Exchange (MCX). Our businesses include stock broking, services rendered in connection with distribution of primary market issues and financial products like mutual funds and fixed deposits, depository services and Portfolio Management.

Kotak Securities Limited is also a depository participant with National Securities Depository Limited (NSDL) and Central Depository Services (India) Limited (CDSL). Kotak Securities Limited is also registered with Insurance Regulatory and Development Authority as Corporate Agent for Kotak Mahindra Old Mutual Life Insurance Limited and is also a Mutual Fund Advisor registered with Association of Mutual Funds in India (AMFI). We are registered as a Research Analyst under SEBI (Research Analyst) Regulations, 2014.

We hereby declare that our activities were neither suspended nor we have defaulted with any stock exchange authority with whom we are registered in last five years. However SEBI, Exchanges and Depositories have conducted the routine inspection and based on their observations have issued advise/warning/deficiency letters/ or levied minor penalty on KSL for certain operational deviations. We have not been debarred from doing business by any Stock Exchange / SEBI or any other authorities; nor has our certificate of registration been cancelled by SEBI at any point of time.

We offer our research services to clients as well as our prospects.

This document is not for public distribution and has been furnished to you solely for your information and must not be reproduced or redistributed to any other person. Persons into whose possession this document may come are required to observe these restrictions.

This material is for the personal information of the authorized recipient, and we are not soliciting any action based upon it. This report is not to be construed as an offer to sell or the solicitation of an offer to buy any security in any jurisdiction where such an offer or solicitation would be illegal. It is for the general information of clients of Kotak Securities Ltd. It does not constitute a personal recommendation or take into account the particular investment objectives, financial situations, or needs of individual clients.

We have reviewed the report, and in so far as it includes current or historical information, it is believed to be reliable though its accuracy or completeness cannot be guaranteed. Neither Kotak Securities Limited, nor any person connected with it, accepts any liability arising from the use of this document. The recipients of this material should rely on their own investigations and take their own professional advice. Price and value of the investments referred to in this material may go up or down. Past performance is not a guide for future performance. Certain transactions -including those involving futures, options and other derivatives as well as non-investment grade securities - involve substantial risk and are not suitable for all investors. Reports based on technical analysis centers on studying charts of a stock's price movement and trading volume, as opposed to focusing on a company's fundamentals and as such, may not match with a report on a company's fundamentals.

Opinions expressed are our current opinions as of the date appearing on this material only. While we endeavor to update on a reasonable basis the information discussed in this material, there may be regulatory, compliance or other reasons that prevent us from doing so. Prospective investors and others are cautioned that any forward-looking statements are not predictions and may be subject to change without notice. Our proprietary trading and investment businesses may make investment decisions that are inconsistent with the recommendations expressed herein.

Kotak Securities Limited has two independent equity research groups: Institutional Equities and Private Client Group. This report has been prepared by the Private Client Group. We and our affiliates/associates, officers, directors, and employees, Research Analyst(including relatives) worldwide may: (a) from time to time, have long or short positions in, and buy or sell the securities thereof, of company (ies) mentioned herein or (b) be engaged in any other transaction involving such securities and earn brokerage or other compensation or act as a market maker in the financial instruments of the subject company/company (ies) discussed herein or act as advisor or lender / borrower to such company (ies) or have other potential/material conflict of interest with respect to any recommendation and related information and opinions at the time of publication of Research Report or at the time of public appearance. Kotak Securities Limited (KSL) may have proprietary long/short position in the above mentioned scrip(s) and therefore may be considered as interested. The views provided herein are general in nature and does not consider risk appetite or investment objective of particular investor; readers are requested to take independent professional advice before investing. This should not be construed as invitation or solicitation to do business with KSL. Kotak Securities Limited is also a Portfolio Manager. Portfolio Management Team (PMS) takes its investment decisions independent of the PCG research and accordingly PMS may have positions contrary to the PCG research recommendation. Kotak Securities Limited does not provide any promise or assurance of favourable view for a particular industry or sector or business group in any manner. The investor is requested to take into consideration all the risk factors including their financial condition, suitability to risk return profile and take professional advice before investing.

The analyst for this report certifies that all of the views expressed in this report accurately reflect his or her personal views about the subject company or companies and its or their securities, and no part of his or her compensation was, is or will be, directly or indirectly related to specific recommendations or views expressed in this report.

No part of this material may be duplicated in any form and/or redistributed without Kotak Securities' prior written consent.

Details of Associates are available on www.kotak.com

1. "Note that the research analysts contributing to the research report may not be registered/qualified as research analysts with FINRA; and

2. Such research analysts may not be associated persons of Kotak Mahindra Inc and therefore, may not be subject to NASD Rule 2711 restrictions on communications with a subject company, public appearances and trading securities held by a research analyst account

Any U.S. recipients of the research who wish to effect transactions in any security covered by the report should do so with or through Kotak Mahindra Inc. (Member FINRA/SIPC) and (ii) any transactions in the securities covered by the research by U.S. recipients must be effected only through Kotak Mahindra Inc. (Member FINRA/SIPC) at 369 Lexington Avenue 28th Floor NY NY 10017 USA (Tel:+1 212-600-8850).

Kotak Securities Limited and its non US affiliates may, to the extent permissible under applicable laws, have acted on or used this research to the extent that it relates to non US issuers, prior to or immediately following its publication. This material should not be construed as an offer to sell or the solicitation of an offer to buy any security in any jurisdiction where such an offer or solicitation would be illegal. This research report and its respective contents do not constitute an offer or invitation to purchase or subscribe for any securities or solicitation of any investments or investment services. Accordingly, any brokerage and investment services including the products and services described are not available to or intended for Canadian persons or US persons."

Research Analyst has served as an officer, director or employee of subject company(ies): No

We or our associates may have received compensation from the subject company(ies) in the past 12 months.

We or our associates have managed or co-managed public offering of securities for the subject company(ies) in the past 12 months: No

We or our associates may have received compensation for investment banking or merchant banking or brokerage services from the subject company(ies) in the past 12 months.

We or our associates may have received any compensation for products or services other than investment banking or merchant banking or brokerage services from the subject company(ies) in the past 12 months. We or our associates may have received compensation or other benefits from the subject company(ies) or third party in connection with the research report. Our associates may have financial interest in the subject company(ies).

Research Analyst or his/her relative's financial interest in the subject company(ies): No

Kotak Securities Limited has financial interest in the subject company(ies) at the end of the month immediately preceding the date of publication of Research Report: No

Our associates may have actual/beneficial ownership of 1% or more securities of the subject company(ies) at the end of the month immediately preceding the date of publication of Research Report.

Research Analyst or his/her relatives has actual/beneficial ownership of 1% or more securities of the subject company(ies) at the end of the month immediately preceding the date of publication of Research Report: No

Kotak Securities Limited has actual/beneficial ownership of 1% or more securities of the subject company(ies) at the end of the month immediately preceding the date of publication of Research Report: No

Subject company(ies) may have been client during twelve months preceding the date of distribution of the research report.

"A graph of daily closing prices of securities is available at <https://www.seindia.com/ChartApp/install/charts/mainpage.jsp> and <http://economicstimes.indiatimes.com/markets/stocks/stock-quotes>. (Choose a company from the list on the browser and select the "three years" icon in the price chart)."

Kotak Securities Limited. Registered Office: 27 BKC, C 27, G Block, Bandra Kurla Complex, Bandra (E), Mumbai 400051. CIN: U99999MH1994PLC134051, Telephone No.: +22 43360000, Fax No.: +22 67132430. Website: www.kotak.com/www.kotaksecurities.com. Correspondence Address: Infinity IT Park, Bldg. No 21, Opp. Film City Road, A K Vaidya Marg, Malad (East), Mumbai 400097. Telephone No: 42856825. SEBI Registration No: INZ000200137 (Member ID: NSE-08081; BSE-673; MSE-1024; MCX-56285; NCDEX-1262), AMFI ARN 0164, PMS INP000000258 and Research Analyst INH000000586. NSDL/CDSL: IN-DP-NSDL-23-97. Our research should not be considered as an advertisement or advice, professional or otherwise. The investor is requested to take into consideration all the risk factors including their financial condition, suitability to risk return profile and the like and take professional advice before investing. Investments in securities market are subject to market risks, read all the related documents carefully before investing. Derivatives are a sophisticated investment device. The investor is requested to take into consideration all the risk factors before actually trading in derivative contracts. Compliance Officer Details: Mr. Manoj Agarwal. Call: 022 - 4285 8484, or Email: ks.compliance@kotak.com.

In case you require any clarification or have any concern, kindly write to us at below email ids:

- **Level 1:** For Trading related queries, contact our customer service at service.securities@kotak.com and for demat account related queries contact us at ks.demat@kotak.com or call us on: Toll free numbers 18002099191 / 1860 266 9191
- **Level 2:** If you do not receive a satisfactory response at Level 1 within 3 working days, you may write to us at ks.escalation@kotak.com or call us on 022-42858445 and if you feel you are still unheard, write to our customer service HOD at ks.servicehead@kotak.com or call us on 022-42858208.
- **Level 3:** If you still have not received a satisfactory response at Level 2 within 3 working days, you may contact our Compliance Officer (Mr. Manoj Agarwal) at ks.compliance@kotak.com or call on 91-(022) 4285 8484.
- **Level 4:** If you have not received a satisfactory response at Level 3 within 7 working days, you may also approach Managing Director / CEO (Mr. Jaideep Hansraj) at ceo.ks@kotak.com or call on 91-(022) 4285 8301.