

Sahaj Agrawal
sahaj.agrawal@kotak.com
+91 79 6607 2231

Prashanth Lalu
prashanth.lalu@kotak.com
+91 22 6218 5497

Prasenjit Biswas, CMT, CFTe
prasenjit.biswas@kotak.com
+91 33 6615 6273

Karan Kulkarni
karan.kulkarni@kotak.com
+91 20 6608 3292

NIFTY DERIVATIVE SNAPSHOT FOR CURRENT SERIES

	NIFTY FUTURE	OI (NO OF SHARES)	VOLUME (NO OF SHARES)	BASIS (Rs)	PCR OI	TREND
CURRENT	18,281	8,162,850	5,748,700	37	0.86	18075
PREVIOUS	18,192	9,621,550	6,310,950	33.2	0.64	
% CHANGE	0.49%	-15.16%	-8.91%	-	-	

OUTLOOK

Nifty

- Nifty opened flat and remained range bound before gaining in the last trading hour.
- Nifty added 84 points to close at 18244.
- OI concentration seen in 18300CE and 18200PE.
- Activity witnessed in 18200 strike.
- PCR OI stands at 0.86 compared to 0.64 in the previous trading session.
- Nifty to trade with a support of 18075.

NIFTY LEVELS

18075 18108 18230 18348 18500 18680

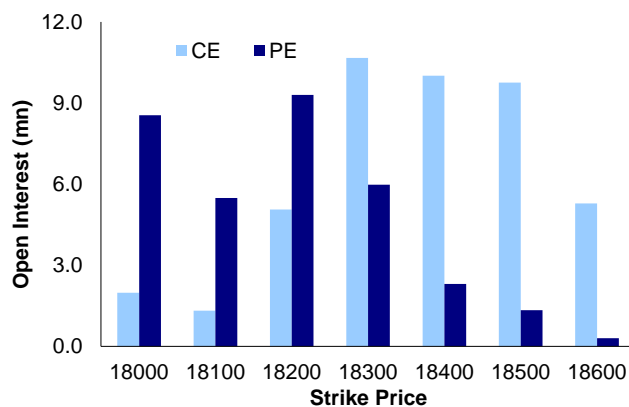
Stocks

- **Sector:** Most sectors gained.
- Market wide open interest is 1,297,294Cr.

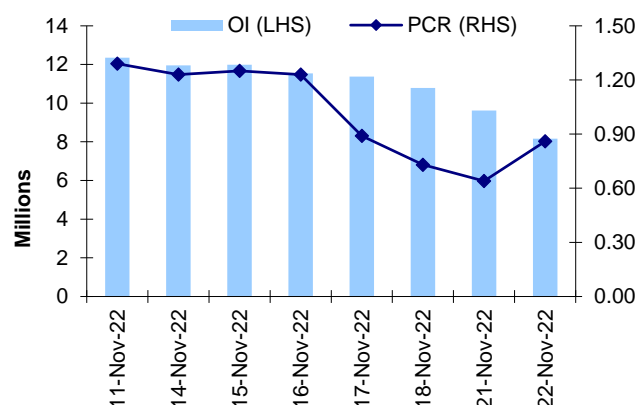
Recommendations

- DERIVATIVES SHORTTERM – BUY NSEFUT BALRAMCHIN NOV @ 355 SL 342 TGT 375, 900
- DERIVATIVES SHORTTERM – BUY NSEFUT HDFCAMC NOV @ 2110 SL 2030 TGT 2230

NIFTY OPTIONS OI



NIFTY PCR OI



FUTURE STATISTICS

OI INCREASE

SYMBOL	OI (%)	OI (SHARES)	PRICE CHG (%)
MFSL	64.2%	5,521,100	-1.7%
LTI	18.0%	1,709,550	-0.2%
ALKEM	13.1%	328,800	0.1%
JKCEMENT	12.4%	611,250	0.6%
BANKBARODA	11.0%	97,858,800	3.0%
IRCTC	10.6%	16,919,875	-0.1%
DELTACORP	8.5%	18,991,900	1.2%
HDFCAMC	8.3%	1,822,800	1.7%
LTTS	8.3%	1,159,200	1.2%
HAL	6.7%	4,535,500	2.8%
SYNGENE	6.3%	1,958,000	0.0%

OI DECREASE

SYMBOL	OI (%)	OI (SHARES)	PRICE CHG (%)
GSPL	-43.3%	2,370,000	1.3%
ESCORTS	-20.4%	1,536,425	0.7%
LALPATHLAB	-19.2%	1,066,500	0.2%
MINDTREE	-17.0%	1,549,200	0.1%
CUB	-12.2%	8,375,000	0.5%
GNFC	-11.2%	6,340,100	2.8%
UBL	-10.7%	942,400	0.6%
MRF	-10.1%	67,880	-0.2%
ONGC	-9.7%	45,618,650	-0.2%
LICHSGFIN	-9.1%	14,660,000	0.1%
ABB	-7.8%	1,478,250	-0.8%

CASH STATISTICS

TOP VOLUMES

SYMBOL	TRADED SHARES (QTY)	VALUE (IN LAKHS)	CLOSE
ICICIBANK	11,256,509	104,030	924
RELIANCE	3,051,201	78,017	2,565
ADANIENT	1,705,043	68,741	4,034
HDFCBANK	4,273,157	68,206	1,595
BHARTIARTL	7,601,660	64,709	848
PNB	123,475,904	59,031	48
HDFC	1,961,553	51,428	2,625
AXISBANK	5,535,233	48,280	870
SBIN	8,048,595	48,175	599

OPTION STATISTICS

SIGNIFICANT CALL OPEN INTEREST

SYMBOL	STRK PRICE	OPTION TYPE	CLOSE (RS)	FUT CLOSE	OI (SHARES)
ONGC	138	CE	0.1	136	12,616,450
HEROMOTOCO	2,700	CE	7.0	2,687	534,000
HEROMOTOCO	2,750	CE	1.8	2,687	424,200
EICHERMOT	3,600	CE	1.6	3,392	512,400
HEROMOTOCO	2,800	CE	0.7	2,687	378,600
EICHERMOT	3,700	CE	1.0	3,392	471,275
EICHERMOT	3,800	CE	0.7	3,392	469,525
ULTRACEMCO	7,000	CE	19.7	6,862	295,000
EICHERMOT	3,500	CE	4.3	3,392	382,725
M&M	1,300	CE	0.5	1,231	1,883,700

SIGNIFICANT PUT OPEN INTEREST

SYMBOL	STRK PRICE	OPTION TYPE	CLOSE (RS)	FUT CLOSE	OI (SHARES)
HEROMOTOCO	2,650	PE	3.4	2,687	195,300
ONGC	133	PE	0.3	136	4,566,100
ULTRACEMCO	6,700	PE	15.3	6,862	114,600
BANKBARODA	160	PE	0.3	167	5,586,750
EICHERMOT	3,300	PE	7.1	3,392	157,325
HINDALCO	420	PE	0.6	432	1,422,225
SBIN	580	PE	0.5	600	4,051,500
MARUTI	8,500	PE	3.1	8,881	177,200
DRREDDY	4,200	PE	2.9	4,376	105,875
BANKBARODA	165	PE	1.2	167	3,972,150

SIGNIFICANT CALL OPEN INTEREST ADDITION

SYMBOL	STRK PRICE	OPTION TYPE	OPEN INT	OI CHG (%)	CLOSE (Rs)
GSPL	255	CE	457,500	490%	0.7
GSPL	260	CE	1,822,500	488%	0.4
GSPL	245	CE	542,500	325%	1.7
GSPL	265	CE	330,000	247%	0.3
MINDTREE	3,450	CE	138,600	235%	1.7
GSPL	220	CE	135,000	200%	20.3
SRTRANSFIN	1,360	CE	323,400	172%	7.2
INDIGO	1,860	CE	329,400	168%	8.9
FEDERALBNK	132	CE	795,000	141%	1.0
HAL	2,780	CE	121,125	126%	9.5

SIGNIFICANT PUT OPEN INTEREST ADDITION

SYMBOL	STRK PRICE	OPTION TYPE	OPEN INT	OI CHG (%)	CLOSE (Rs)
SRTRANSFIN	1,320	PE	145,200	1513%	8.4
CANBK	325	PE	143,100	1225%	7.0
INDUSTOWER	202	PE	142,800	629%	2.4
GSPL	210	PE	197,500	259%	0.2
SRTRANSFIN	1,300	PE	261,000	257%	3.7
NMDC	117	PE	549,400	242%	1.6
HAL	2,650	PE	127,775	241%	6.0
HAL	2,700	PE	206,625	218%	15.1
APOLLOTYRE	282	PE	143,500	193%	1.6
HAL	2,680	PE	112,100	171%	10.6

CALL OPTION VOLUMES

SYMBOL	STRK PRICE	OPTION TYPE	CONTRACTS	CLOSE (Rs)
ADANIANT	4,100	CE	30,852	17.7
RELIANCE	2,600	CE	26,915	5.7
HAL	2,700	CE	26,173	43.5
ULTRACEMCO	7,000	CE	23,471	19.7
RELIANCE	2,560	CE	23,283	20.8
RELIANCE	2,580	CE	21,395	11.0
ADANIANT	4,050	CE	20,522	33.4
HDFCBANK	1,600	CE	19,887	8.8
BAJFINANCE	6,800	CE	18,069	17.5
ADANIANT	4,200	CE	15,741	5.2

PUT OPTION VOLUMES

SYMBOL	STRK PRICE	OPTION TYPE	CONTRACTS	CLOSE (Rs)
ADANIANT	4,000	PE	18,272	21.5
RELIANCE	2,540	PE	17,668	4.5
RELIANCE	2,560	PE	13,275	10.1
ADANIANT	3,900	PE	13,198	8.4
BAJFINANCE	6,700	PE	11,427	46.9
BAJFINANCE	6,600	PE	10,207	18.8
ADANIANT	3,800	PE	9,758	4.1
RELIANCE	2,520	PE	8,335	2.0
ULTRACEMCO	6,800	PE	8,228	30.1
RELIANCE	2,500	PE	8,050	1.2

RATING SCALE (PRIVATE CLIENT GROUP)

- BUY** – Stock/Index looks strong from the expiry/near term perspective and is expected to gain on the basis of technical and/or derivative parameters. Time frame is minimum of current expiry and in certain cases extend to the next series depending on the stock behaviour. Strict stop loss needs to be adhered to for every buy/long recommendation given.
- SELL** – Stock/Index looks weak from the expiry/near term perspective and is expected to gain on the basis of technical and/or derivative parameters. Time frame is minimum of current expiry and in certain cases extend to the next series depending on the stock behaviour. Strict stop loss needs to be adhered to for every sell/short recommendation given.

FUNDAMENTAL RESEARCH TEAM (PRIVATE CLIENT GROUP)

Shrikant Chouhan Head of Research shrikant.chouhan@kotak.com +91 22 6218 5408	Arun Agarwal Auto & Auto Ancillary arun.agarwal@kotak.com +91 22 6218 6443	Amit Agarwal, CFA Transportation, Paints, FMCG agarwal.amit@kotak.com +91 22 6218 6439	Hemali Dhame Banking & Finance Hemali.Dhame@kotak.com +91 22 6218 6433
Jatin Damania Metals & Mining, Midcap jatin.damania@kotak.com +91 22 6218 6440	Purvi Shah Pharmaceuticals purvi.shah@kotak.com +91 22 6218 6432	Rini Mehta Research Associate rini.mehta@kotak.com +91 22 6218 6433	K. Kathirvelu Support Executive k.kathirvelu@kotak.com +91 22 6218 6427
Sumit Pokharna Oil and Gas, Information Tech sumit.pokharna@kotak.com +91 22 6218 6438	Pankaj Kumar Construction, Capital Goods & Midcaps pankajr.kumar@kotak.com +91 22 6218 6434		

TECHNICAL RESEARCH TEAM (PRIVATE CLIENT GROUP)

Shrikant Chouhan shrikant.chouhan@kotak.com +91 22 6218 5408	Amol Athawale amol.athawale@kotak.com +91 20 6620 3350	Sayed Haider Research Associate sayed.haider@kotak.com +91 22 62185498
---	---	--

DERIVATIVES RESEARCH TEAM (PRIVATE CLIENT GROUP)

Sahaj Agrawal sahaj.agrawal@kotak.com +91 79 6607 2231	Prashanth Lalu prashanth.lalu@kotak.com +91 22 6218 5497	Prasenjit Biswas, CMT, CFTE prasenjit.biswas@kotak.com +91 33 6615 6273	Karan Kulkarni karan.kulkarni@kotak.com +91 20 6608 3292
---	---	--	---

Disclosure/Disclaimer (Private Client Group)

Kotak Securities Limited established in 1994, is a subsidiary of Kotak Mahindra Bank Limited. Kotak Securities is one of India's largest brokerage and distribution house. Kotak Securities Limited is a corporate trading and clearing member of BSE Limited (BSE), National Stock Exchange of India Limited (NSE), Metropolitan Stock Exchange of India Limited (MSE), National Commodity and Derivatives Exchange (NCDEX) and Multi Commodity Exchange (MCX). Our businesses include stock broking, services rendered in connection with distribution of primary market issues and financial products like mutual funds and fixed deposits, depository services and Portfolio Management.

Kotak Securities Limited is also a depository participant with National Securities Depository Limited (NSDL) and Central Depository Services (India) Limited (CDSL). Kotak Securities Limited is also registered with Insurance Regulatory and Development Authority as Corporate Agent for Kotak Mahindra Old Mutual Life Insurance Limited and is also a Mutual Fund Advisor registered with Association of Mutual Funds in India (AMFI). We are registered as a Research Analyst under SEBI (Research Analyst) Regulations, 2014.

We hereby declare that our activities were neither suspended nor we have defaulted with any stock exchange authority with whom we are registered in last five years. However SEBI, Exchanges and Depositories have conducted the routine inspection and based on their observations have issued advise/warning/deficiency letters/ or levied minor penalty on KSL for certain operational deviations. We have not been debarred from doing business by any Stock Exchange / SEBI or any other authorities; nor has our certificate of registration been cancelled by SEBI at any point of time.

We offer our research services to clients as well as our prospects.

This document is not for public distribution and has been furnished to you solely for your information and must not be reproduced or redistributed to any other person. Persons into whose possession this document may come are required to observe these restrictions.

This material is for the personal information of the authorized recipient, and we are not soliciting any action based upon it. This report is not to be construed as an offer to sell or the solicitation of an offer to buy any security in any jurisdiction where such an offer or solicitation would be illegal. It is for the general information of clients of Kotak Securities Ltd. It does not constitute a personal recommendation or take into account the particular investment objectives, financial situations, or needs of individual clients.

We have reviewed the report, and in so far as it includes current or historical information, it is believed to be reliable though its accuracy or completeness cannot be guaranteed. Neither Kotak Securities Limited, nor any person connected with it, accepts any liability arising from the use of this document. The recipients of this material should rely on their own investigations and take their own professional advice. Price and value of the investments referred to in this material may go up or down. Past performance is not a guide for future performance. Certain transactions - including those involving futures, options and other derivatives as well as non-investment grade securities - involve substantial risk and are not suitable for all investors. Reports based on technical analysis centers on studying charts of a stock's price movement and trading volume, as opposed to focusing on a company's fundamentals and as such, may not match with a report on a company's fundamentals.

Opinions expressed are our current opinions as of the date appearing on this material only. While we endeavor to update on a reasonable basis the information discussed in this material, there may be regulatory, compliance or other reasons that prevent us from doing so. Prospective investors and others are cautioned that any forward-looking statements are not predictions and may be subject to change without notice. Our proprietary trading and investment businesses may make investment decisions that are inconsistent with the recommendations expressed herein.

Kotak Securities Limited has two independent equity research groups: Institutional Equities and Private Client Group. This report has been prepared by the Private Client Group.

We and our affiliates/associates, officers, directors, and employees, Research Analyst(including relatives) worldwide may: (a) from time to time, have long or short positions in, and buy or sell the securities thereof, of company (ies) mentioned herein or (b) be engaged in any other transaction involving such securities and earn brokerage or other compensation or act as a market maker in the financial instruments of the subject company/company (ies) discussed herein or act as advisor or lender / borrower to such company (ies) or have other potential/material conflict of interest with respect to any recommendation and related information and opinions at the time of publication of Research Report or at the time of public appearance. Kotak Securities Limited (KSL) may have proprietary long/short position in the above mentioned scrip(s) and therefore may be considered as interested. The views provided herein are general in nature and does not consider risk appetite or investment objective of particular investor; readers are requested to take independent professional advice before investing. This should not be construed as invitation or solicitation to do business with KSL. Kotak Securities Limited is also a Portfolio Manager. Portfolio Management Team (PMS) takes its investment decisions independent of the PCG research and accordingly PMS may have positions contrary to the PCG research recommendation. Kotak Securities Limited does not provide any promise or assurance of favourable view for a particular industry or sector or business group in any manner. The investor is requested to take into consideration all the risk factors including their financial condition, suitability to risk return profile and take professional advice before investing.

The analyst for this report certifies that all of the views expressed in this report accurately reflect his or her personal views about the subject company or companies and its or their securities, and no part of his or her compensation was, is or will be, directly or indirectly related to specific recommendations or views expressed in this report.

No part of this material may be duplicated in any form and/or redistributed without Kotak Securities' prior written consent.

Details of Associates are available on www.kotak.com

1. "Note that the research analysts contributing to the research report may not be registered/qualified as research analysts with FINRA; and
2. Such research analysts may not be associated persons of Kotak Mahindra Inc and therefore, may not be subject to NASD Rule 2711 restrictions on communications with a subject company, public appearances and trading securities held by a research analyst account

Any U.S. recipients of the research who wish to effect transactions in any security covered by the report should do so with or through Kotak Mahindra Inc. (Member FINRA/SIPC) and (ii) any transactions in the securities covered by the research by U.S. recipients must be effected only through Kotak Mahindra Inc. (Member FINRA/SIPC) at 369 Lexington Avenue 28th Floor NY NY 10017 USA (Tel:+1 212-600-8850).

Kotak Securities Limited and its non US affiliates may, to the extent permissible under applicable laws, have acted on or used this research to the extent that it relates to non US issuers, prior to or immediately following its publication. This material should not be construed as an offer to sell or the solicitation of an offer to buy any security in any jurisdiction where such an offer or solicitation would be illegal. This research report and its respective contents do not constitute an offer or invitation to purchase or subscribe for any securities or solicitation of any investments or investment services. Accordingly, any brokerage and investment services including the products and services described are not available to or intended for Canadian persons or US persons."

Research Analyst has served as an officer, director or employee of subject company(ies): No

We or our associates may have received compensation from the subject company(ies) in the past 12 months.

We or our associates have managed or co-managed public offering of securities for the subject company(ies) in the past 12 months: No

We or our associates may have received compensation for investment banking or merchant banking or brokerage services from the subject company(ies) in the past 12 months. We or our associates may have received any compensation for products or services other than investment banking or merchant banking or brokerage services from the subject company(ies) in the past 12 months. We or our associates may have received compensation or other benefits from the subject company(ies) or third party in connection with the research report. Our associates may have financial interest in the subject company(ies).

Research Analyst or his/her relative's financial interest in the subject company(ies): No

Kotak Securities Limited has financial interest in the subject company(ies) at the end of the month immediately preceding the date of publication of Research Report: No

"However, Kotak Securities Prop/Arbitrage team could have exposure/financial interest to the subject company/companies during the ongoing month."

Nature of financial interest is holding of equity shares or derivatives of the subject company.

Our associates may have actual/beneficial ownership of 1% or more securities of the subject company(ies) at the end of the month immediately preceding the date of publication of Research Report.

Research Analyst or his/her relatives has actual/beneficial ownership of 1% or more securities of the subject company(ies) at the end of the month immediately preceding the date of publication of Research Report: No.

Kotak Securities Limited has actual/beneficial ownership of 1% or more securities of the subject company(ies) at the end of the month immediately preceding the date of publication of Research Report: No

By referring to any particular sector, Kotak Securities Limited does not provide any promise or assurance of favourable view for a particular industry or sector or business group in any manner. The investor is requested to take into consideration all the risk factors including their financial condition, suitability to risk return profile and take professional advice before investing. Such representations are not indicative of future results.

Subject company(ies) may have been client during twelve months preceding the date of distribution of the research report.

"A graph of daily closing prices of securities is available at <https://www.nseindia.com/ChartApp/install/charts/mainpage.jsp>

and <http://economictimes.indiatimes.com/markets/stocks/stock-quotes>. (Choose a company from the list on the browser and select the "three years" icon in the price chart.)"

Our research should not be considered as an advertisement or advice, professional or otherwise. The investor is requested to take into consideration all the risk factors including their financial condition, suitability to risk return profile and the like and take professional advice before investing. Investments in securities market are subject to market risks, read all the related documents carefully before investing. Derivatives are a sophisticated investment device. The investor is requested to take into consideration all the risk factors before actually trading in derivative contracts. Compliance Officer Details: Mr. Sanjay Nair. Call: 022 - 4285 8484, or Email: ks.compliance@kotak.com.

Kotak Securities Limited. Registered Office: 27 BKC, C 27, G Block, Bandra Kurla Complex, Bandra (E), Mumbai 400051. CIN: U99999MH1994PLC134051, Telephone No.: +22 43360000, Fax No.: +22 67132430. Website: www.kotak.com / www.kotaksecurities.com. Correspondence Address: Infinity IT Park, Bldg. No 21, Opp. Film City Road, A K Vaidya Marg, Malad (East), Mumbai 400097. Telephone No: 42856825. SEBI Registration No: IN2000200137(Member of NSE, BSE, MSE, MCX & NCDEX) , AMFI ARN 0164, PMS INP000000258 and Research Analyst INH000000586. NSDL/CDSL: IN-DP-629-2021. Compliance Officer Details: Mr. Sanjay Nair Call: 022 - 4285 8484, or Email: ks.compliance@kotak.com

Details of	Contact Person	Address	Contact No.	Email Id
Customer care/ Client Servicing	Mr. Tabrez Anwar	Kotak Securities Ltd., 2nd Floor, Neptune Elements, Road No 22, Wagle Industrial Estate, Kisan Nagar, Thane (West), Thane, Maharashtra, 400604	18002099191/ 18002099393	service.securities@kotak.com ks.escalation@kotak.com
Head of Customer care/ Client Servicing	Mr. Hitesh Sindhvani	Kotak Securities Ltd., 2nd Floor, Neptune Elements, Road No 22, Wagle Industrial Estate, Kisan Nagar, Thane (West), Thane, Maharashtra, 400604	022-42858208	ks.servicehead@kotak.com
Compliance Officer	Mr. Sandeep Gupta	Kotak Towers, 8th Floor, Building No.21, Infinity Park, Off Western Express Highway, Malad (East), Mumbai, Maharashtra - 400097.	022-42858484	ks.compliance@kotak.com
CEO	Mr. Jaideep Hansraj	Kotak Towers, 8th Floor, Building No.21, Infinity Park, Off Western Express Highway, Malad (East), Mumbai, Maharashtra - 400097.	022-42858301	ceo.ks@kotak.com