

Sahaj Agrawal  
sahaj.agrawal@kotak.com  
+91 79 6607 2231

Prashanth Lalu  
prashanth.lalu@kotak.com  
+91 22 6218 5497

Prasenjit Biswas, CMT, CFTe  
prasenjit.biswas@kotak.com  
+91 33 6615 6273

## NIFTY DERIVATIVE SNAPSHOT FOR CURRENT SERIES

	NIFTY FUTURE	OI (NO OF SHARES OUTSTANDING)	VOLUME (NO OF SHARES TRADED)	BASIS (Rs)	PCR OI	TREND
CURRENT	15,161	1,09,66,125	59,46,500	-1.55	1.36	<b>14590</b>
PREVIOUS	15,185	1,08,52,875	49,06,150	11.95	1.48	
% CHANGE	-0.15%	1.04%	21.21%	-	-	

## OUTLOOK

### Nifty

- Nifty opened positive and traded above 15200 levels before giving up all its gains and closing flat.
- Nifty lost 10 points to close at 15163.
- OI concentration seen in 15500CE and 14000PE
- Addition witnessed in 15100CE and 14400PE.
- PCR OI stands at 1.36 compared to 1.48 in the previous trading session.
- Nifty to trade with a support of 14590.

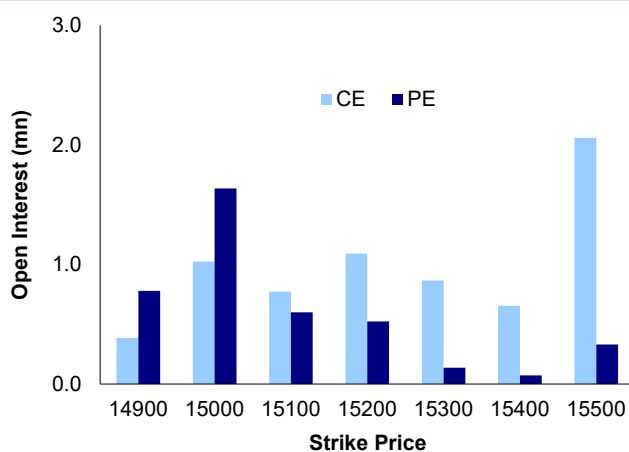
### NIFTY LEVELS

14590	14754	14925	15076	15246	15497
-------	-------	-------	-------	-------	-------

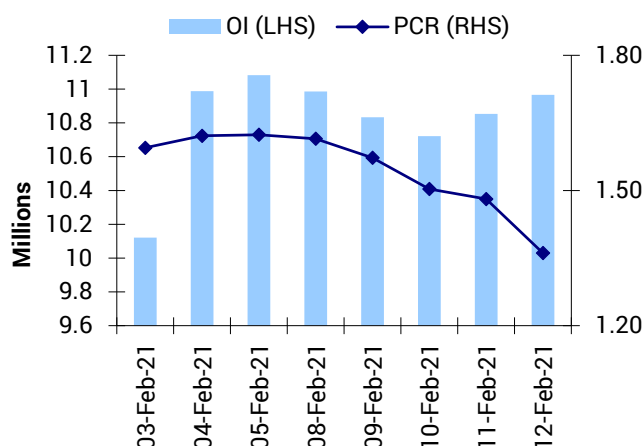
### Stocks

- **Sector:-** Metal stocks traded negative.
- Market wide-open interest is 547,625Cr.

## NIFTY OPTIONS OI



## NIFTY PCR OI



## FUTURE STATISTICS

## OI INCREASE

SYMBOL	OI (%)	OI (SHARES)	PRICE CHG (%)
CONCOR	24.27%	74,17,998	9.69%
ASHOKLEY	12.76%	4,54,14,000	-5.04%
ITC	11.83%	16,51,48,800	-3.97%
PEL	11.37%	43,57,100	5.97%
COALINDIA	9.18%	3,55,48,800	-2.41%
NATIONALUM	8.48%	6,26,45,000	-3.55%
MUTHOOTFIN	8.14%	47,34,750	3.04%
VOLTAS	7.61%	41,71,000	-2.18%
AMARAJABAT	6.23%	24,22,000	0.42%
TCS	6.18%	63,46,200	-0.47%

## OI DECREASE

SYMBOL	OI (%)	OI (SHARES)	PRICE CHG (%)
MOTHERSUMI	-10.38%	3,37,96,000	10.04%
ACC	-9.12%	34,29,000	-0.57%
DABUR	-7.52%	1,18,72,500	-0.34%
AMBUJACEM	-7.36%	1,91,13,000	0.20%
RAMCOCEM	-6.82%	17,08,500	1.61%
ICICIGI	-6.59%	10,71,850	-0.19%
AUROPHARMA	-6.44%	93,55,450	-0.56%
LICHSGFIN	-6.03%	84,08,000	1.84%
LALPATHLAB	-5.81%	97,250	-0.40%
HINDALCO	-5.72%	3,04,87,000	-1.56%

## CASH STATISTICS

## TOP VOLUMES

SYMBOL	TRADED SHARES (QTY)	VALUE (IN LAKHS)	CLOSE
RELIANCE	1,40,74,374	2,88,512	2,042
ITC	11,05,68,108	2,41,844	217
SBIN	5,35,89,755	2,10,252	393
TATAMOTORS	6,40,93,642	2,09,175	325
ICICIBANK	1,90,49,709	1,22,221	648
ADANIENT	1,68,10,897	1,17,270	719
AXISBANK	1,56,68,442	1,17,031	750
ASHOKLEY	7,96,28,255	1,02,768	128
TATASTEEL	1,47,05,479	1,01,062	681

## OPTION STATISTICS

## SIGNIFICANT CALL OPEN INTEREST

SYMBOL	STRK PRICE	OPTION TYPE	CLOSE (RS)	FUT CLOSE	OI (SHARES)
COALINDIA	150	CE	0.7	134	153,46,800
ONGC	100	CE	2.0	94	141,37,200
ONGC	105	CE	1.3	94	99,56,100
ITC	230	CE	2.2	213	287,61,600
COALINDIA	140	CE	1.9	134	58,46,400
HINDUNILVR	2,300	CE	26.7	2,247	15,66,300
ITC	240	CE	1.4	213	258,59,200
NTPC	100	CE	1.2	96	139,30,800
MARUTI	8,000	CE	84.0	7,593	4,55,200
ITC	250	CE	0.9	213	246,27,200

## SIGNIFICANT PUT OPEN INTEREST

SYMBOL	STRK PRICE	OPTION TYPE	CLOSE (RS)	FUT CLOSE	OI (SHARES)
COALINDIA	130	PE	1.9	134	34,39,800
SBIN	390	PE	11.6	394	94,17,000
SBIN	300	PE	0.7	394	81,45,000
SBIN	350	PE	2.2	394	77,97,000
AXISBANK	700	PE	7.2	751	36,49,200
TATAMOTORS	300	PE	6.3	326	54,60,600
COALINDIA	135	PE	4.1	134	21,67,200
SBIN	370	PE	4.8	394	65,40,000
ITC	200	PE	1.3	213	93,05,600
SBIN	330	PE	1.2	394	57,81,000

## SIGNIFICANT CALL OPEN INTEREST ADDITION

SYMBOL	STRK PRICE	OPTION TYPE	OPEN INT	OI CHG (%)	CLOSE (Rs)
ADANIANT	750	CE	4,28,000	2278%	19.6
ADANIANT	720	CE	4,66,000	1356%	31.3
M&MFIN	225	CE	1,84,000	1050%	3.0
MOTHERSUMI	192	CE	3,01,000	760%	13.3
MOTHERSUMI	197	CE	2,87,000	720%	10.7
ITC	217	CE	13,50,400	494%	4.6
ADANIANT	730	CE	2,54,000	452%	26.9
CONCOR	560	CE	2,62,584	442%	17.4
IOC	95	CE	2,08,000	433%	2.9
TATACHEM	650	CE	2,94,000	407%	3.3

## SIGNIFICANT PUT OPEN INTEREST ADDITION

SYMBOL	STRK PRICE	OPTION TYPE	OPEN INT	OI CHG (%)	CLOSE (Rs)
ADANIANT	700	PE	2,44,000	12100%	23.7
APOLLOTYRE	212	PE	2,25,000	4400%	1.9
ADANIANT	680	PE	1,88,000	3033%	16.1
CONCOR	520	PE	1,03,158	2100%	9.6
MOTHERSUMI	195	PE	6,16,000	1660%	8.8
ADANIANT	660	PE	1,52,000	1420%	10.6
MANAPPURAM	157	PE	2,64,000	1000%	1.2
L&TFH	81	PE	5,17,592	867%	0.4
ADANIANT	650	PE	3,90,000	829%	8.5
MOTHERSUMI	185	PE	9,45,000	650%	5.0

## CALL OPTION VOLUMES

SYMBOL	STRK PRICE	OPTION TYPE	CONTRACTS	CLOSE (Rs)
RELIANCE	2,100	CE	44,337	31.0
ITC	230	CE	24,609	2.2
RELIANCE	2,200	CE	22,290	12.8
ITC	220	CE	18,480	4.0
ITC	240	CE	17,725	1.4
RELIANCE	2,050	CE	15,833	48.5
ITC	250	CE	14,831	0.9
RELIANCE	2,000	CE	14,809	75.0
MOTHERSUMI	200	CE	14,004	9.7
SBIN	400	CE	12,762	10.9

## PUT OPTION VOLUMES

SYMBOL	STRK PRICE	OPTION TYPE	CONTRACTS	CLOSE (Rs)
RELIANCE	2000	PE	20761	31.35
RELIANCE	1900	PE	10004	9.25
RELIANCE	1950	PE	7618	17.05
RELIANCE	2050	PE	7540	57.15
ITC	200	PE	7120	1.3
ITC	210	PE	6060	3.95
SBIN	390	PE	5545	11.6
ITC	215	PE	4997	6.85
RELIANCE	2020	PE	4919	40.4
SBIN	380	PE	4840	7.5

---

### RATING SCALE (PRIVATE CLIENT GROUP)

- BUY** – Stock/Index looks strong from the expiry/near term perspective and is expected to gain on the basis of technical and/or derivative parameters. Time frame is minimum of current expiry and in certain cases extend to the next series depending on the stock behaviour. Strict stop loss needs to be adhered to for every buy/long recommendation given.
- SELL** – Stock/Index looks weak from the expiry/near term perspective and is expected to gain on the basis of technical and/or derivative parameters. Time frame is minimum of current expiry and in certain cases extend to the next series depending on the stock behaviour. Strict stop loss needs to be adhered to for every sell/short recommendation given.

---

### FUNDAMENTAL RESEARCH TEAM (PRIVATE CLIENT GROUP)

<b>Rusmik Oza</b> Head of Research rusmik.oza@kotak.com +91 22 6218 6441	<b>Arun Agarwal</b> Auto & Auto Ancillary arun.agarwal@kotak.com +91 22 6218 6443	<b>Amit Agarwal, CFA</b> Transportation, Paints, FMCG agarwal.amit@kotak.com +91 22 6218 6439	<b>Priyesh Babariya</b> Research Associate priyesh.babariya@kotak.com +91 22 6218 6433
<b>Jatin Damania</b> Metals & Mining, Midcap jatin.damania@kotak.com +91 22 6218 6440	<b>Purvi Shah</b> Pharmaceuticals purvi.shah@kotak.com +91 22 6218 6432	<b>K. Kathirvelu</b> Support Executive k.kathirvelu@kotak.com +91 22 6218 6427	
<b>Sumit Pokharna</b> Oil and Gas, Information Tech sumit.pokharna@kotak.com +91 22 6218 6438	<b>Pankaj Kumar</b> Midcap pankajr.kumar@kotak.com +91 22 6218 6434	<b>Krishna Nain</b> M&A, Corporate actions krishna.nain@kotak.com +91 22 6218 7907	

---

### TECHNICAL RESEARCH TEAM (PRIVATE CLIENT GROUP)

<b>Shrikant Chouhan</b> shrikant.chouhan@kotak.com +91 22 6218 5408	<b>Amol Athawale</b> amol.athawale@kotak.com +91 20 6620 3350	<b>Sayed Haider</b> Research Associate sayed.haider@kotak.com +91 22 62185498
---	---	--

---

### DERIVATIVES RESEARCH TEAM (PRIVATE CLIENT GROUP)

<b>Sahaj Agrawal</b> sahaj.agrawal@kotak.com +91 79 6607 2231	<b>Prashanth Lalu</b> prashanth.lalu@kotak.com +91 22 6218 5497	<b>Prasenjit Biswas, CMT, CFTe</b> prasenjit.biswas@kotak.com +91 33 6615 6273
---	---	--

**Disclosure/Disclaimer (Private Client Group)**

Kotak Securities Limited established in 1994, is a subsidiary of Kotak Mahindra Bank Limited. Kotak Securities is one of India's largest brokerage and distribution house.

Kotak Securities Limited is a corporate trading and clearing member of BSE Limited (BSE), National Stock Exchange of India Limited (NSE), Metropolitan Stock Exchange of India Limited (MSE), National Commodity and Derivatives Exchange (NCDEX) and Multi Commodity Exchange (MCX). Our businesses include stock broking, services rendered in connection with distribution of primary market issues and financial products like mutual funds and fixed deposits, depository services and Portfolio Management.

Kotak Securities Limited is also a depository participant with National Securities Depository Limited (NSDL) and Central Depository Services (India) Limited (CDSL). Kotak Securities Limited is also registered with Insurance Regulatory and Development Authority as Corporate Agent for Kotak Mahindra Old Mutual Life Insurance Limited and is also a Mutual Fund Advisor registered with Association of Mutual Funds in India (AMFI). We are registered as a Research Analyst under SEBI (Research Analyst) Regulations, 2014.

We hereby declare that our activities were neither suspended nor we have defaulted with any stock exchange authority with whom we are registered in last five years. However SEBI, Exchanges and Depositories have conducted the routine inspection and based on their observations have issued advise/warning/deficiency letters/ or levied minor penalty on KSL for certain operational deviations. We have not been debarred from doing business by any Stock Exchange / SEBI or any other authorities; nor has our certificate of registration been cancelled by SEBI at any point of time.

We offer our research services to clients as well as our prospects.

This document is not for public distribution and has been furnished to you solely for your information and must not be reproduced or redistributed to any other person. Persons into whose possession this document may come are required to observe these restrictions.

This material is for the personal information of the authorized recipient, and we are not soliciting any action based upon it. This report is not to be construed as an offer to sell or the solicitation of an offer to buy any security in any jurisdiction where such an offer or solicitation would be illegal. It is for the general information of clients of Kotak Securities Ltd. It does not constitute a personal recommendation or take into account the particular investment objectives, financial situations, or needs of individual clients.

We have reviewed the report, and in so far as it includes current or historical information, it is believed to be reliable though its accuracy or completeness cannot be guaranteed. Neither Kotak Securities Limited, nor any person connected with it, accepts any liability arising from the use of this document. The recipients of this material should rely on their own investigations and take their own professional advice. Price and value of the investments referred to in this material may go up or down. Past performance is not a guide for future performance. Certain transactions -including those involving futures, options and other derivatives as well as non-investment grade securities - involve substantial risk and are not suitable for all investors. Reports based on technical analysis centers on studying charts of a stock's price movement and trading volume, as opposed to focusing on a company's fundamentals and as such, may not match with a report on a company's fundamentals.

Opinions expressed are our current opinions as of the date appearing on this material only. While we endeavor to update on a reasonable basis the information discussed in this material, there may be regulatory, compliance or other reasons that prevent us from doing so. Prospective investors and others are cautioned that any forward-looking statements are not predictions and may be subject to change without notice. Our proprietary trading and investment businesses may make investment decisions that are inconsistent with the recommendations expressed herein.

Kotak Securities Limited has two independent equity research groups: Institutional Equities and Private Client Group. This report has been prepared by the Private Client Group. We and our affiliates/associates, officers, directors, and employees, Research Analyst(including relatives) worldwide may: (a) from time to time, have long or short positions in, and buy or sell the securities thereof, of company (ies) mentioned herein or (b) be engaged in any other transaction involving such securities and earn brokerage or other compensation or act as a market maker in the financial instruments of the subject company/company (ies) discussed herein or act as advisor or lender / borrower to such company (ies) or have other potential/material conflict of interest with respect to any recommendation and related information and opinions at the time of publication of Research Report or at the time of public appearance. Kotak Securities Limited (KSL) may have proprietary long/short position in the above mentioned scrip(s) and therefore may be considered as interested. The views provided herein are general in nature and does not consider risk appetite or investment objective of particular investor; readers are requested to take independent professional advice before investing. This should not be construed as invitation or solicitation to do business with KSL. Kotak Securities Limited is also a Portfolio Manager. Portfolio Management Team (PMS) takes its investment decisions independent of the PCG research and accordingly PMS may have positions contrary to the PCG research recommendation. Kotak Securities Limited does not provide any promise or assurance of favourable view for a particular industry or sector or business group in any manner. The investor is requested to take into consideration all the risk factors including their financial condition, suitability to risk return profile and take professional advice before investing.

The analyst for this report certifies that all of the views expressed in this report accurately reflect his or her personal views about the subject company or companies and its or their securities, and no part of his or her compensation was, is or will be, directly or indirectly related to specific recommendations or views expressed in this report.

No part of this material may be duplicated in any form and/or redistributed without Kotak Securities' prior written consent.

Details of Associates are available on [www.kotak.com](http://www.kotak.com)

1. "Note that the research analysts contributing to the research report may not be registered/qualified as research analysts with FINRA; and

2. Such research analysts may not be associated persons of Kotak Mahindra Inc and therefore, may not be subject to NASD Rule 2711 restrictions on communications with a subject company, public appearances and trading securities held by a research analyst account

Any U.S. recipients of the research who wish to effect transactions in any security covered by the report should do so with or through Kotak Mahindra Inc. (Member FINRA/SIPC) and (ii) any transactions in the securities covered by the research by U.S. recipients must be effected only through Kotak Mahindra Inc. (Member FINRA/SIPC) at 369 Lexington Avenue 28th Floor NY NY 10017 USA (Tel:+1 212-600-8850).

Kotak Securities Limited and its non US affiliates may, to the extent permissible under applicable laws, have acted on or used this research to the extent that it relates to non US issuers, prior to or immediately following its publication. This material should not be construed as an offer to sell or the solicitation of an offer to buy any security in any jurisdiction where such an offer or solicitation would be illegal. This research report and its respective contents do not constitute an offer or invitation to purchase or subscribe for any securities or solicitation of any investments or investment services. Accordingly, any brokerage and investment services including the products and services described are not available to or intended for Canadian persons or US persons."

Research Analyst has served as an officer, director or employee of subject company(ies): No

We or our associates may have received compensation from the subject company(ies) in the past 12 months.

We or our associates have managed or co-managed public offering of securities for the subject company(ies) in the past 12 months: No

We or our associates may have received compensation for investment banking or merchant banking or brokerage services from the subject company(ies) in the past 12 months.

We or our associates may have received any compensation for products or services other than investment banking or merchant banking or brokerage services from the subject company(ies) in the past 12 months. We or our associates may have received compensation or other benefits from the subject company(ies) or third party in connection with the research report. Our associates may have financial interest in the subject company(ies).

Research Analyst or his/her relative's financial interest in the subject company(ies): No

Kotak Securities Limited has financial interest in the subject company(ies) at the end of the month immediately preceding the date of publication of Research Report: No

Our associates may have actual/beneficial ownership of 1% or more securities of the subject company(ies) at the end of the month immediately preceding the date of publication of Research Report.

Research Analyst or his/her relatives has actual/beneficial ownership of 1% or more securities of the subject company(ies) at the end of the month immediately preceding the date of publication of Research Report: No

Kotak Securities Limited has actual/beneficial ownership of 1% or more securities of the subject company(ies) at the end of the month immediately preceding the date of publication of Research Report: No

Subject company(ies) may have been client during twelve months preceding the date of distribution of the research report.

"A graph of daily closing prices of securities is available at <https://www.pseindia.com/ChartApp/install/charts/mainpage.jsp> and <http://economicstimes.indiatimes.com/markets/stocks/stock-quotes>. (Choose a company from the list on the browser and select the "three years" icon in the price chart)."

Kotak Securities Limited. Registered Office: 27 BKC, C 27, G Block, Bandra Kurla Complex, Bandra (E), Mumbai 400051. CIN: U99999MH1994PLC134051, Telephone No.: +22 43360000, Fax No.: +22 67132430. Website: [www.kotak.com/www.kotaksecurities.com](http://www.kotak.com/www.kotaksecurities.com). Correspondence Address: Infinity IT Park, Bldg. No 21, Opp. Film City Road, A K Vaidya Marg, Malad (East), Mumbai 400097. Telephone No: 42856825. SEBI Registration No: INZ000200137 (Member ID: NSE-08081; BSE-673; MSE-1024; MCX-56285; NCDEX-1262), AMFI ARN 0164, PMS INP00000258 and Research Analyst INH000000586. NSDL/CDSL: IN-DP-NSDL-23-97. Our research should not be considered as an advertisement or advice, professional or otherwise. The investor is requested to take into consideration all the risk factors including their financial condition, suitability to risk return profile and the like and take professional advice before investing. Investments in securities market are subject to market risks, read all the related documents carefully before investing. Derivatives are a sophisticated investment device. The investor is requested to take into consideration all the risk factors before actually trading in derivative contracts. Compliance Officer Details: Mr. Manoj Agarwal. Call: 022 - 4285 8484, or Email: [ks.compliance@kotak.com](mailto:ks.compliance@kotak.com).

In case you require any clarification or have any concern, kindly write to us at below email ids:

- **Level 1:** For Trading related queries, contact our customer service at 'service.securities@kotak.com' and for demat account related queries contact us at [ks.demat@kotak.com](mailto:ks.demat@kotak.com) or call us on: Toll free numbers 18002099191 / 1860 266 9191
- **Level 2:** If you do not receive a satisfactory response at Level 1 within 3 working days, you may write to us at [ks.escalation@kotak.com](mailto:ks.escalation@kotak.com) or call us on 022-42858445 and if you feel you are still unheard, write to our customer service HOD at [ks.servicehead@kotak.com](mailto:ks.servicehead@kotak.com) or call us on 022-42858208.
- **Level 3:** If you still have not received a satisfactory response at Level 2 within 3 working days, you may contact our Compliance Officer (Mr. Manoj Agarwal) at [ks.compliance@kotak.com](mailto:ks.compliance@kotak.com) or call on 91-(022) 4285 8484.
- **Level 4:** If you have not received a satisfactory response at Level 3 within 7 working days, you may also approach Managing Director / CEO (Mr. Jaideep Hansraj) at [ceo.ks@kotak.com](mailto:ceo.ks@kotak.com) or call on 91-(022) 4285 8301.