

Sahaj Agrawal
sahaj.agrawal@kotak.com
+91 79 6607 2231

Prashanth Lalul
prashanth.lalu@kotak.com
+91 22 6218 5497

Prasenjit Biswas, CMT, CFTe
prasenjit.biswas@kotak.com
+91 33 6615 6273

NIFTY DERIVATIVE SNAPSHOT FOR CURRENT SERIES

	NIFTY FUTURE	OI (NO OF SHARES OUTSTANDING)	VOLUME (NO OF SHARES TRADED)	BASIS (Rs)	PCR OI	TREND
CURRENT	17,973	1,24,80,350	58,46,300	28.05	1.54	17280
PREVIOUS	17,900	1,27,17,100	63,59,400	5.1	1.56	
% CHANGE	0.41%	-1.86%	-8.07%	-	-	

OUTLOOK

Nifty

- Nifty traded with a positive bias surpassing 18000 levels.
- Nifty added 50 points to close at 17945.
- OI concentration seen in 18000CE and 17000PE.
- Activity witnessed in 18000 strike.
- PCR OI stands at 1.54 compared to 1.56 in the previous trading session.
- Nifty to trade with a support of 17280.

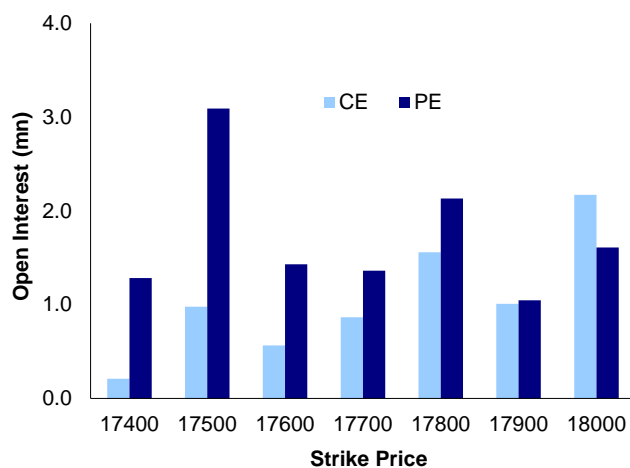
NIFTY LEVELS

17080 17280 17449 17688 17845 18072

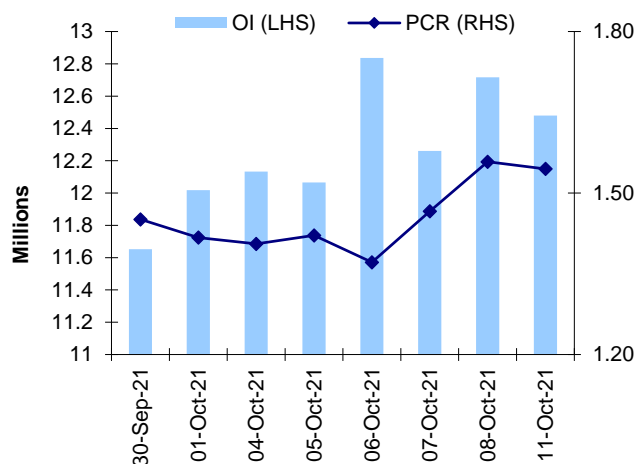
Stocks

- **Sector:-** Auto stocks traded positive.
- Market wide-open interest is 919,179Cr.

NIFTY OPTIONS OI



NIFTY PCR OI



FUTURE STATISTICS

OI INCREASE

SYMBOL	OI (%)	OI (SHARES)	PRICE CHG (%)
CROMPTON	26.5%	14,43,200	0.1%
DALBHARAT	15.5%	3,60,750	-1.1%
JKCEMENT	14.4%	80,675	1.6%
MINDTREE	11.4%	29,81,600	-4.0%
IEX	10.9%	97,68,750	12.2%
ALKEM	10.7%	5,74,000	0.0%
BHEL	9.7%	13,36,96,500	2.0%
APLLTD	9.6%	27,36,250	5.5%
INFY	8.7%	4,29,45,600	-1.9%
NTPC	8.6%	6,03,06,000	2.6%

OI DECREASE

SYMBOL	OI (%)	OI (SHARES)	PRICE CHG (%)
IRCTC	-16.1%	27,57,950	-2.1%
INDUSTOWER	-10.8%	1,31,71,200	-0.4%
BANDHANBNK	-10.3%	1,84,95,000	-5.6%
SRF	-10.2%	6,76,625	0.8%
BATAINDIA	-9.4%	18,16,650	0.3%
DIXON	-8.3%	5,17,125	2.7%
MPHASIS	-8.0%	21,30,375	-4.4%
INDHOTEL	-7.6%	1,75,50,000	2.0%
BEL	-7.1%	2,50,76,200	4.2%
HINDALCO	-6.2%	2,67,13,750	2.9%

CASH STATISTICS

TOP VOLUMES

SYMBOL	TRADED SHARES (QTY)	VALUE (IN LAKHS)	CLOSE
TATAMOTORS	11,34,04,983	4,66,101	416
TCS	1,18,45,402	4,38,597	3,686
TATAPOWER	12,63,07,288	2,38,118	192
RELIANCE	68,15,737	1,82,812	2,653
HDFCBANK	65,40,424	1,06,690	1,634
SBIN	2,06,86,981	96,739	469
TATASTEEL	63,49,658	83,400	1,313
MARUTI	10,69,536	82,279	7,701
ZEEL	2,69,10,318	80,304	306

OPTION STATISTICS

SIGNIFICANT CALL OPEN INTEREST

SYMBOL	STRK PRICE	OPTION TYPE	CLOSE (RS)	FUT CLOSE	OI (SHARES)
NTPC	150	CE	1.7	145	5,72,79,300
NTPC	145	CE	3.5	145	2,48,23,500
TCS	4,000	CE	21.9	3,695	44,28,000
M&M	900	CE	20.1	896	40,82,400
ONGC	170	CE	3.7	166	1,93,57,800
ONGC	165	CE	5.4	166	1,56,38,700
HINDALCO	500	CE	13.6	489	61,51,150
ONGC	160	CE	8.2	166	1,28,28,200
INDUSINDBK	1,200	CE	30.2	1,175	30,61,800
TCS	3,900	CE	31.3	3,695	22,69,200

SIGNIFICANT PUT OPEN INTEREST

SYMBOL	STRK PRICE	OPTION TYPE	CLOSE (RS)	FUT CLOSE	OI (SHARES)
INDUSINDBK	1,100	PE	10.0	1,175	19,12,500
TCS	3,500	PE	22.1	3,695	12,25,200
ONGC	160	PE	2.6	166	63,75,600
TCS	3,700	PE	89.8	3,695	11,36,700
TCS	3,600	PE	45.3	3,695	10,45,500
BANKBARODA	80	PE	1.4	88	1,27,64,700
COALINDIA	170	PE	1.0	197	45,02,400
TATAMOTORS	350	PE	2.1	418	59,62,200
DRREDDY	4,900	PE	123.7	4,903	1,59,500
WIPRO	600	PE	6.6	656	20,78,400

SIGNIFICANT CALL OPEN INTEREST ADDITION

SYMBOL	STRK PRICE	OPTION TYPE	OPEN INT	OI CHG (%)	CLOSE (Rs)
TORNTPOWER	560	CE	6,12,000	20300%	22.6
APOLLOTYRE	247	CE	1,37,500	5400%	9.3
EXIDEIND	192	CE	1,44,000	3900%	6.0
TCS	3,720	CE	3,76,500	2961%	79.5
TCS	3,680	CE	1,48,800	2818%	96.6
TCS	3,740	CE	3,70,200	1012%	71.6
TCS	3,700	CE	15,86,100	970%	88.0
APOLLOTYRE	252	CE	1,15,000	820%	7.3
APOLLOTYRE	255	CE	5,20,000	700%	7.1
APOLLOTYRE	242	CE	1,27,500	629%	10.6

SIGNIFICANT PUT OPEN INTEREST ADDITION

SYMBOL	STRK PRICE	OPTION TYPE	OPEN INT	OI CHG (%)	CLOSE (Rs)
TCS	3,440	PE	1,26,600	6933%	13.3
IEX	740	PE	2,38,750	6267%	24.4
TATAMOTORS	430	PE	3,30,600	3767%	27.2
IEX	720	PE	3,20,000	2227%	17.5
TATAMOTORS	410	PE	18,46,800	1520%	15.3
TATAMOTORS	420	PE	19,20,900	1196%	20.7
IEX	710	PE	1,15,000	820%	15.1
BANKBARODA	78	PE	2,10,600	800%	1.0
GMRINFRA	43	PE	13,95,000	786%	2.3
TATAMOTORS	405	PE	3,33,450	631%	13.0

CALL OPTION VOLUMES

SYMBOL	STRK PRICE	OPTION TYPE	CONTRACTS	CLOSE (Rs)
TCS	4,000	CE	34,085	21.9
TATAMOTORS	420	CE	31,100	18.3
RELIANCE	2,700	CE	30,861	53.6
TCS	3,800	CE	29,793	50.8
TATAMOTORS	400	CE	27,232	28.1
SBIN	470	CE	25,927	16.4
TCS	3,700	CE	25,252	88.0
SBIN	480	CE	22,516	12.4
TCS	3,900	CE	22,448	31.3
IEX	800	CE	21,656	42.2

PUT OPTION VOLUMES

SYMBOL	STRK PRICE	OPTION TYPE	CONTRACTS	CLOSE (Rs)
TCS	3,700	PE	17,730	89.8
TCS	3,600	PE	15,284	45.3
TCS	3,500	PE	14,461	22.1
RELIANCE	2,600	PE	9,433	34.7
TATAMOTORS	400	PE	9,173	10.7
RELIANCE	2,500	PE	7,873	11.1
TATAMOTORS	380	PE	7,187	5.0
SBIN	460	PE	6,986	10.3
RELIANCE	2,700	PE	6,722	88.4
TCS	3,400	PE	5,813	10.8

RATING SCALE (PRIVATE CLIENT GROUP)

- BUY** – Stock/Index looks strong from the expiry/near term perspective and is expected to gain on the basis of technical and/or derivative parameters. Time frame is minimum of current expiry and in certain cases extend to the next series depending on the stock behaviour. Strict stop loss needs to be adhered to for every buy/long recommendation given.
- SELL** – Stock/Index looks weak from the expiry/near term perspective and is expected to gain on the basis of technical and/or derivative parameters. Time frame is minimum of current expiry and in certain cases extend to the next series depending on the stock behaviour. Strict stop loss needs to be adhered to for every sell/short recommendation given.

FUNDAMENTAL RESEARCH TEAM (PRIVATE CLIENT GROUP)

Shrikant Chouhan Head of Research shrikant.chouhan@kotak.com +91 22 6218 5408	Arun Agarwal Auto & Auto Ancillary arun.agarwal@kotak.com +91 22 6218 6443	Amit Agarwal, CFA Transportation, Paints, FMCG agarwal.amit@kotak.com +91 22 6218 6439	Hemali Dhame Banking & Finance Hemali.Dhame@kotak.com +91 22 6218 6433
Jatin Damania Metals & Mining, Midcap jatin.damania@kotak.com +91 22 6218 6440	Purvi Shah Pharmaceuticals purvi.shah@kotak.com +91 22 6218 6432	Rini Mehta Research Associate rini.mehta@kotak.com +91 80801 97299	K. Kathirvelu Support Executive k.kathirvelu@kotak.com +91 22 6218 6427
Sumit Pokharna Oil and Gas, Information Tech sumit.pokharna@kotak.com +91 22 6218 6438	Pankaj Kumar Midcap pankajr.kumar@kotak.com +91 22 6218 6434		

TECHNICAL RESEARCH TEAM (PRIVATE CLIENT GROUP)

Shrikant Chouhan shrikant.chouhan@kotak.com +91 22 6218 5408	Amol Athawale amol.athawale@kotak.com +91 20 6620 3350	Sayed Haider Research Associate sayed.haider@kotak.com +91 22 62185498
---	---	--

DERIVATIVES RESEARCH TEAM (PRIVATE CLIENT GROUP)

Sahaj Agrawal sahaj.agrawal@kotak.com +91 79 6607 2231	Prashanth Lalu prashanth.lalu@kotak.com +91 22 6218 5497	Prasenjit Biswas, CMT, CFTe prasenjit.biswas@kotak.com +91 33 6615 6273
---	---	--

Disclosure/Disclaimer (Private Client Group)

Kotak Securities Limited established in 1994, is a subsidiary of Kotak Mahindra Bank Limited. Kotak Securities is one of India's largest brokerage and distribution house.

Kotak Securities Limited is a corporate trading and clearing member of BSE Limited (BSE), National Stock Exchange of India Limited (NSE), Metropolitan Stock Exchange of India Limited (MSE), National Commodity and Derivatives Exchange (NCDEX) and Multi Commodity Exchange (MCX). Our businesses include stock broking, services rendered in connection with distribution of primary market issues and financial products like mutual funds and fixed deposits, depository services and Portfolio Management.

Kotak Securities Limited is also a depository participant with National Securities Depository Limited (NSDL) and Central Depository Services (India) Limited (CDSL). Kotak Securities Limited is also registered with Insurance Regulatory and Development Authority as Corporate Agent for Kotak Mahindra Old Mutual Life Insurance Limited and is also a Mutual Fund Advisor registered with Association of Mutual Funds in India (AMFI). We are registered as a Research Analyst under SEBI (Research Analyst) Regulations, 2014.

We hereby declare that our activities were neither suspended nor we have defaulted with any stock exchange authority with whom we are registered in last five years. However SEBI, Exchanges and Depositories have conducted the routine inspection and based on their observations have issued advise/warning/deficiency letters/ or levied minor penalty on KSL for certain operational deviations. We have not been debarred from doing business by any Stock Exchange / SEBI or any other authorities; nor has our certificate of registration been cancelled by SEBI at any point of time.

We offer our research services to clients as well as our prospects.

This document is not for public distribution and has been furnished to you solely for your information and must not be reproduced or redistributed to any other person. Persons into whose possession this document may come are required to observe these restrictions.

This material is for the personal information of the authorized recipient, and we are not soliciting any action based upon it. This report is not to be construed as an offer to sell or the solicitation of an offer to buy any security in any jurisdiction where such an offer or solicitation would be illegal. It is for the general information of clients of Kotak Securities Ltd. It does not constitute a personal recommendation or take into account the particular investment objectives, financial situations, or needs of individual clients.

We have reviewed the report, and in so far as it includes current or historical information, it is believed to be reliable though its accuracy or completeness cannot be guaranteed. Neither Kotak Securities Limited, nor any person connected with it, accepts any liability arising from the use of this document. The recipients of this material should rely on their own investigations and take their own professional advice. Price and value of the investments referred to in this material may go up or down. Past performance is not a guide for future performance. Certain transactions -including those involving futures, options and other derivatives as well as non-investment grade securities - involve substantial risk and are not suitable for all investors. Reports based on technical analysis centers on studying charts of a stock's price movement and trading volume, as opposed to focusing on a company's fundamentals and as such, may not match with a report on a company's fundamentals.

Opinions expressed are our current opinions as of the date appearing on this material only. While we endeavor to update on a reasonable basis the information discussed in this material, there may be regulatory, compliance or other reasons that prevent us from doing so. Prospective investors and others are cautioned that any forward-looking statements are not predictions and may be subject to change without notice. Our proprietary trading and investment businesses may make investment decisions that are inconsistent with the recommendations expressed herein.

Kotak Securities Limited has two independent equity research groups: Institutional Equities and Private Client Group. This report has been prepared by the Private Client Group. We and our affiliates/associates, officers, directors, and employees, Research Analyst(including relatives) worldwide may: (a) from time to time, have long or short positions in, and buy or sell the securities thereof, of company (ies) mentioned herein or (b) be engaged in any other transaction involving such securities and earn brokerage or other compensation or act as a market maker in the financial instruments of the subject company/company (ies) discussed herein or act as advisor or lender / borrower to such company (ies) or have other potential/material conflict of interest with respect to any recommendation and related information and opinions at the time of publication of Research Report or at the time of public appearance. Kotak Securities Limited (KSL) may have proprietary long/short position in the above mentioned scrip(s) and therefore may be considered as interested. The views provided herein are general in nature and does not consider risk appetite or investment objective of particular investor; readers are requested to take independent professional advice before investing. This should not be construed as invitation or solicitation to do business with KSL. Kotak Securities Limited is also a Portfolio Manager. Portfolio Management Team (PMS) takes its investment decisions independent of the PCG research and accordingly PMS may have positions contrary to the PCG research recommendation. Kotak Securities Limited does not provide any promise or assurance of favourable view for a particular industry or sector or business group in any manner. The investor is requested to take into consideration all the risk factors including their financial condition, suitability to risk return profile and take professional advice before investing.

The analyst for this report certifies that all of the views expressed in this report accurately reflect his or her personal views about the subject company or companies and its or their securities, and no part of his or her compensation was, is or will be, directly or indirectly related to specific recommendations or views expressed in this report.

No part of this material may be duplicated in any form and/or redistributed without Kotak Securities' prior written consent.

Details of Associates are available on www.kotak.com

1. "Note that the research analysts contributing to the research report may not be registered/qualified as research analysts with FINRA; and

2. Such research analysts may not be associated persons of Kotak Mahindra Inc and therefore, may not be subject to NASD Rule 2711 restrictions on communications with a subject company, public appearances and trading securities held by a research analyst account

Any U.S. recipients of the research who wish to effect transactions in any security covered by the report should do so with or through Kotak Mahindra Inc. (Member FINRA/SIPC) and (ii) any transactions in the securities covered by the research by U.S. recipients must be effected only through Kotak Mahindra Inc. (Member FINRA/SIPC) at 369 Lexington Avenue 28th Floor NY NY 10017 USA (Tel:+1 212-600-8850).

Kotak Securities Limited and its non US affiliates may, to the extent permissible under applicable laws, have acted on or used this research to the extent that it relates to non US issuers, prior to or immediately following its publication. This material should not be construed as an offer to sell or the solicitation of an offer to buy any security in any jurisdiction where such an offer or solicitation would be illegal. This research report and its respective contents do not constitute an offer or invitation to purchase or subscribe for any securities or solicitation of any investments or investment services. Accordingly, any brokerage and investment services including the products and services described are not available to or intended for Canadian persons or US persons."

Research Analyst has served as an officer, director or employee of subject company(ies): No

We or our associates may have received compensation from the subject company(ies) in the past 12 months.

We or our associates have managed or co-managed public offering of securities for the subject company(ies) in the past 12 months: No

We or our associates may have received compensation for investment banking or merchant banking or brokerage services from the subject company(ies) in the past 12 months.

We or our associates may have received any compensation for products or services other than investment banking or merchant banking or brokerage services from the subject company(ies) in the past 12 months. We or our associates may have received compensation or other benefits from the subject company(ies) or third party in connection with the research report. Our associates may have financial interest in the subject company(ies).

Research Analyst or his/her relative's financial interest in the subject company(ies): No

Kotak Securities Limited has financial interest in the subject company(ies) at the end of the month immediately preceding the date of publication of Research Report: No

Our associates may have actual/beneficial ownership of 1% or more securities of the subject company(ies) at the end of the month immediately preceding the date of publication of Research Report.

Research Analyst or his/her relatives has actual/beneficial ownership of 1% or more securities of the subject company(ies) at the end of the month immediately preceding the date of publication of Research Report: No

Kotak Securities Limited has actual/beneficial ownership of 1% or more securities of the subject company(ies) at the end of the month immediately preceding the date of publication of Research Report: No

Subject company(ies) may have been client during twelve months preceding the date of distribution of the research report.

"A graph of daily closing prices of securities is available at <https://www.pseindia.com/ChartApp/install/charts/mainpage.jsp> and <http://economicstimes.indiatimes.com/markets/stocks/stock-quotes>. (Choose a company from the list on the browser and select the "three years" icon in the price chart)."

Kotak Securities Limited. Registered Office: 27 BKC, C 27, G Block, Bandra Kurla Complex, Bandra (E), Mumbai 400051. CIN: U99999MH1994PLC134051, Telephone No.: +22 43360000, Fax No.: +22 67132430. Website: www.kotak.com/www.kotaksecurities.com. Correspondence Address: Infinity IT Park, Bldg. No 21, Opp. Film City Road, A K Vaidya Marg, Malad (East), Mumbai 400097. Telephone No: 42856825. SEBI Registration No: INZ000200137 (Member ID: NSE-08081; BSE-673; MSE-1024; MCX-56285; NCDEX-1262), AMFI ARN 0164, PMS INP000000258 and Research Analyst INH000000586. NSDL/CDSL: IN-DP-NSDL-23-97. Our research should not be considered as an advertisement or advice, professional or otherwise. The investor is requested to take into consideration all the risk factors including their financial condition, suitability to risk return profile and the like and take professional advice before investing. Investments in securities market are subject to market risks, read all the related documents carefully before investing. Derivatives are a sophisticated investment device. The investor is requested to take into consideration all the risk factors before actually trading in derivative contracts. Compliance Officer Details: Mr. Manoj Agarwal. Call: 022 - 4285 8484, or Email: ks.compliance@kotak.com.

In case you require any clarification or have any concern, kindly write to us at below email ids:

- **Level 1:** For Trading related queries, contact our customer service at service.securities@kotak.com and for demat account related queries contact us at ks.demat@kotak.com or call us on: Toll free numbers 18002099191 / 1860 266 9191
- **Level 2:** If you do not receive a satisfactory response at Level 1 within 3 working days, you may write to us at ks.escalation@kotak.com or call us on 022-42858445 and if you feel you are still unheard, write to our customer service HOD at ks.servicehead@kotak.com or call us on 022-42858208.
- **Level 3:** If you still have not received a satisfactory response at Level 2 within 3 working days, you may contact our Compliance Officer (Mr. Manoj Agarwal) at ks.compliance@kotak.com or call on 91-(022) 4285 8484.
- **Level 4:** If you have not received a satisfactory response at Level 3 within 7 working days, you may also approach Managing Director / CEO (Mr. Jaideep Hansraj) at ceo.ks@kotak.com or call on 91-(022) 4285 8301.