

Sahaj Agrawal
sahaj.agrawal@kotak.com
+91 79 6607 2231

Prashanth Lalu
prashanth.lalu@kotak.com
+91 22 6218 5497

Prasenjit Biswas, CMT, CFTe
prasenjit.biswas@kotak.com
+91 33 6615 6273

Karan Kulkarni
karan.kulkarni@kotak.com
+91 20 6608 3292

NIFTY DERIVATIVE SNAPSHOT FOR CURRENT SERIES

	NIFTY FUTURE	OI (NO OF SHARES OUTSTANDING)	VOLUME (NO OF SHARES TRADED)	BASIS (Rs)	PCR OI	TREND
CURRENT	17,828	1,16,12,850	1,18,49,300	68.5	1.46	17000
PREVIOUS	17,370	1,10,74,950	1,12,65,900	58.25	1.45	
% CHANGE	2.63%	4.86%	5.18%	-	-	

OUTLOOK

Nifty

- Nifty opened gap-up and continued to gain significantly in the second half.
- Nifty added 446 points to close at 17759.
- OI concentration seen in 18000CE and 16500PE.
- Addition witnessed in 18000CE and 17500PE.
- PCR OI stands at 1.46 compared to 1.45 in the previous trading session.
- Nifty to trade with a support of 17000.

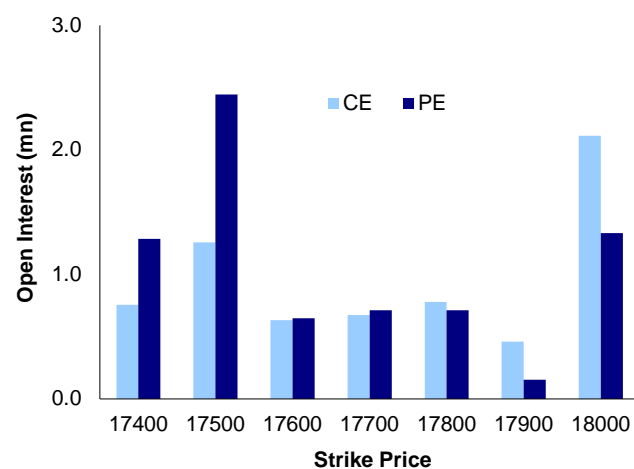
NIFTY LEVELS

17000 17350 17650 17780 17945 18080

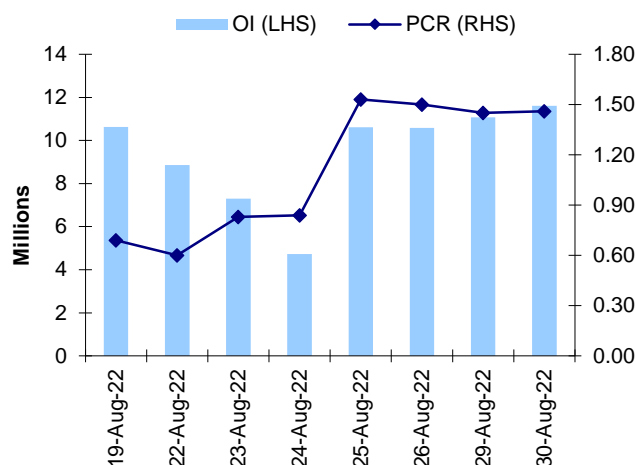
Stocks

- **Sector:-** All sectors contributed to the up move.
- Market wide open interest is 1,146,117Cr.

NIFTY OPTIONS OI



NIFTY PCR OI



FUTURE STATISTICS

OI INCREASE

SYMBOL	OI (%)	OI (SHARES)	PRICE CHG (%)
PEL	602.7%	58,00,850	-44.8%
ASHOKLEY	16.1%	4,77,35,000	3.9%
MOTHERSON	12.5%	4,48,96,500	1.5%
HONAUT	11.7%	10,920	1.0%
ACC	11.6%	25,12,500	0.5%
CHAMBLFERT	11.2%	71,46,000	1.2%
CROMPTON	10.4%	52,56,000	0.9%
PFC	9.9%	3,95,49,800	0.8%
AARTIIND	8.9%	29,90,300	2.5%
GNFC	8.8%	54,50,900	3.2%

OI DECREASE

SYMBOL	OI (%)	OI (SHARES)	PRICE CHG (%)
COALINDIA	-6.9%	3,24,78,600	1.8%
BATAINDIA	-6.6%	18,33,975	3.1%
HAVELLS	-6.0%	42,53,500	3.6%
ALKEM	-5.9%	4,75,200	2.2%
BAJFINANCE	-5.6%	44,20,375	4.9%
NAUKRI	-5.5%	15,80,375	4.5%
APOLLOTYRE	-5.4%	1,31,18,000	3.8%
APOLLOHOSP	-5.1%	17,72,125	1.7%
COFORGE	-3.9%	8,09,850	1.4%
DIVISLAB	-3.8%	31,60,350	1.2%

CASH STATISTICS

TOP VOLUMES

SYMBOL	TRADED SHARES (QTY)	VALUE (IN LAKHS)	CLOSE
RELIANCE	1,06,78,670	2,79,220	2,638
ADANIENT	43,92,183	1,41,038	3,194
ICICIBANK	1,25,44,701	1,10,185	887
TCS	34,31,525	1,09,530	3,211
MARUTI	10,16,312	92,154	9,082
SBIN	1,48,35,308	78,384	531
HDFC	30,85,257	74,771	2,446
HDFCBANK	50,67,700	74,438	1,486
KOTAKBANK	38,85,850	73,439	1,915

OPTION STATISTICS

SIGNIFICANT CALL OPEN INTEREST

SYMBOL	STRK PRICE	OPTION TYPE	CLOSE (RS)	FUT CLOSE	OI (SHARES)
ITC	320	CE	7.3	322	1,13,50,400
NTPC	170	CE	2.8	165	1,45,57,800
LUPIN	700	CE	13.4	673	11,73,850
HEROMOTOCO	3,000	CE	41.9	2,856	4,62,000
ITC	330	CE	3.5	322	88,03,200
ACC	2,300	CE	74.6	2,314	2,96,000
M&M	1,300	CE	50.7	1,315	12,75,400
GAIL	140	CE	3.8	137	48,06,800
ONGC	140	CE	5.0	139	56,71,050
RELIANCE	2,700	CE	51.3	2,647	35,77,250

SIGNIFICANT PUT OPEN INTEREST

SYMBOL	STRK PRICE	OPTION TYPE	CLOSE (RS)	FUT CLOSE	OI (SHARES)
INDUSINDBK	1,000	PE	6.1	1,113	15,46,200
ITC	310	PE	2.5	322	50,56,000
SBIN	500	PE	4.8	534	32,95,500
ITC	300	PE	1.0	322	45,82,400
TATAMOTORS	450	PE	9.4	473	30,55,200
ITC	315	PE	3.8	322	40,12,800
WIPRO	400	PE	6.4	416	19,09,000
ITC	320	PE	5.8	322	34,46,400
RELIANCE	2,600	PE	51.1	2,647	15,10,250
M&M	1,200	PE	9.5	1,315	5,01,900

SIGNIFICANT CALL OPEN INTEREST ADDITION

SYMBOL	STRK PRICE	OPTION TYPE	OPEN INT	OI CHG (%)	CLOSE (Rs)
AARTIIND	830	CE	7,26,750	7673%	35.9
MOTHERSON	152	CE	2,74,500	6000%	0.4
FEDERALBNK	123	CE	3,80,000	1800%	2.5
OBEROIRLTY	1,020	CE	1,42,800	1260%	42.2
RELIANCE	2,520	CE	1,16,000	955%	153.0
L&TFH	94	CE	4,37,276	880%	0.5
GODREJCP	930	CE	1,80,000	847%	32.4
DLF	405	CE	1,65,000	614%	11.2
AMBUJACEM	435	CE	8,85,600	583%	7.9
MANAPPURAM	106	CE	5,40,000	463%	5.3

SIGNIFICANT PUT OPEN INTEREST ADDITION

SYMBOL	STRK PRICE	OPTION TYPE	OPEN INT	OI CHG (%)	CLOSE (Rs)
INDIACEM	225	PE	2,05,900	3450%	10.0
INDIACEM	230	PE	2,69,700	3000%	12.4
JINDALSTEL	430	PE	1,57,500	1300%	17.9
TATASTEEL	76	PE	1,14,750	1250%	0.1
INDIACEM	220	PE	10,38,200	752%	7.7
FEDERALBNK	119	PE	1,60,000	700%	5.3
INDHOTEL	290	PE	2,69,474	570%	12.2
RELIANCE	2,380	PE	3,34,750	535%	6.9
PNB	26	PE	2,88,000	500%	0.1
GMRINFRA	37	PE	1,35,000	500%	1.9

CALL OPTION VOLUMES

SYMBOL	STRK PRICE	OPTION TYPE	CONTRACTS	CLOSE (Rs)
RELIANCE	2,700	CE	41,777	51.3
RELIANCE	2,600	CE	39,538	98.6
RELIANCE	2,800	CE	23,102	23.4
RELIANCE	2,640	CE	19,663	77.1
RELIANCE	2,620	CE	18,874	87.1
BAJAJFINSV	17,000	CE	14,916	737.2
RELIANCE	2,660	CE	13,662	68.0
BAJFINANCE	7,200	CE	13,388	321.7
INFY	1,500	CE	13,039	43.8
MARUTI	9,500	CE	12,809	145.1

PUT OPTION VOLUMES

SYMBOL	STRK PRICE	OPTION TYPE	CONTRACTS	CLOSE (Rs)
RELIANCE	2,700	CE	41,777	51.3
RELIANCE	2,600	CE	39,538	98.6
RELIANCE	2,800	CE	23,102	23.4
RELIANCE	2,640	CE	19,663	77.1
RELIANCE	2,620	CE	18,874	87.1
BAJAJFINSV	17,000	CE	14,916	737.2
RELIANCE	2,660	CE	13,662	68.0
BAJFINANCE	7,200	CE	13,388	321.7
INFY	1,500	CE	13,039	43.8
MARUTI	9,500	CE	12,809	145.1

RATING SCALE (PRIVATE CLIENT GROUP)

- BUY** – Stock/Index looks strong from the expiry/near term perspective and is expected to gain on the basis of technical and/or derivative parameters. Time frame is minimum of current expiry and in certain cases extend to the next series depending on the stock behaviour. Strict stop loss needs to be adhered to for every buy/long recommendation given.
- SELL** – Stock/Index looks weak from the expiry/near term perspective and is expected to gain on the basis of technical and/or derivative parameters. Time frame is minimum of current expiry and in certain cases extend to the next series depending on the stock behaviour. Strict stop loss needs to be adhered to for every sell/short recommendation given.

FUNDAMENTAL RESEARCH TEAM (PRIVATE CLIENT GROUP)

Shrikant Chouhan Head of Research shrikant.chouhan@kotak.com +91 22 6218 5408	Arun Agarwal Auto & Auto Ancillary arun.agarwal@kotak.com +91 22 6218 6443	Amit Agarwal, CFA Transportation, Paints, FMCG agarwal.amit@kotak.com +91 22 6218 6439	Hemali Dhame Banking & Finance Hemali.Dhame@kotak.com +91 22 6218 6433
Jatin Damania Metals & Mining, Midcap jatin.damania@kotak.com +91 22 6218 6440	Purvi Shah Pharmaceuticals purvi.shah@kotak.com +91 22 6218 6432	Rini Mehta Research Associate rini.mehta@kotak.com +91 22 6218 6433	K. Kathirvelu Support Executive k.kathirvelu@kotak.com +91 22 6218 6427
Sumit Pokharna Oil and Gas, Information Tech sumit.pokharna@kotak.com +91 22 6218 6438	Pankaj Kumar Construction, Capital Goods & Midcaps pankajr.kumar@kotak.com +91 22 6218 6434		

TECHNICAL RESEARCH TEAM (PRIVATE CLIENT GROUP)

Shrikant Chouhan shrikant.chouhan@kotak.com +91 22 6218 5408	Amol Athawale amol.athawale@kotak.com +91 20 6620 3350	Sayed Haider Research Associate sayed.haider@kotak.com +91 22 62185498
---	---	--

DERIVATIVES RESEARCH TEAM (PRIVATE CLIENT GROUP)

Sahaj Agrawal sahaj.agrawal@kotak.com +91 79 6607 2231	Prashanth Lalu prashanth.lalu@kotak.com +91 22 6218 5497	Prasenjit Biswas, CMT, CFTE prasenjit.biswas@kotak.com +91 33 6615 6273	Karan Kulkarni karan.kulkarni@kotak.com +91 20 6608 3292
---	---	--	---



Disclosure/Disclaimer (Private)

Kotak Securities Limited established in 1994, is a stock exchange registered company. Kotak Securities Limited is a corporate trading and National Commodity and Derivatives Exchange (NCDEX) primary market issues and financial products like mutual funds and fixed deposits, depository services and Portfolio Management.

Kotak Securities Limited is also a depository participant with National Securities Depository Limited (NSDL) and Central Depository Services (India) Limited (CDSL). Kotak Securities Limited is also registered with Insurance Regulatory and Development Authority as Corporate Agent for Kotak Mahindra Old Mutual Life Insurance Limited and is also a Mutual Fund Advisor, registered with Association of Mutual Funds in India (AMFI). We are registered with SEBI (Research Analyst) (Research Analyst Registration No. INR000000231).

We hereby declare that our activities were neither suspended nor were we debarred from doing business by any stock exchange authority or other authorities in last five years. However, we have not been debarred from doing business by any Stock Exchange / SEBI or any other authorities; nor has our certificate of registration been cancelled by SEBI at any point of time.

We offer our research services to clients as well as our prospects.

This document is not for public distribution and has been furnished to you in confidence. Possession of this document may require you to observe these terms and conditions.

This material is for the personal information of the authorized recipient, and we are not soliciting any action based upon it. This report is not to be construed as an offer to sell or the solicitation of an offer to buy any security in any jurisdiction where such an offer or solicitation would be illegal. It is for the personal information of clients of Kotak Securities Ltd. It does not constitute a personal recommendation or take into account the particular investment objectives, financial situations, or needs of individual clients.

We have reviewed the report, and in so far as it includes current or historical information, it is believed to be reliable though its accuracy or completeness cannot be guaranteed. Kotak Securities Limited, nor any person connected with it, accepts any liability arising from the use of this document. The recipients of this report are advised to conduct their own investigation and take their own professional advice. Price and value of the investments referred to in this material may go up or down. Past performance is not a guide for future performance. Certain transactions involving futures, options and other derivatives as technical analysis centers on studying charts of a stock's price movement on a company's fundamentals.

Opinions expressed are our current opinions as of the date appearing hereon and are subject to change without notice. Our proprietary trading and investment decisions are based on our research and analysis. We are not responsible for the information contained in this material, and we do not warrant the accuracy or completeness of the information.

Kotak Securities Limited has two independent equity research groups: Institutional Equities and Private Client Group. This report has been prepared by the Private Client Group. We and our affiliates/associates, officers, directors, and employees, Research Analyst (including relatives) worldwide may: (a) from time to time, have long or short positions in, and buy or sell the securities thereof, of company (ies) mentioned herein or (b) be engaged in any other transaction involving such securities and earn brokerage or other compensation or act as a market maker in the financial instruments of the subject company/compare interest with respect to any recommendation and related information.

(KSL) may have proprietary long/short position in the above mentioned securities. Kotak Securities Limited is also a Portfolio Manager. Portfolio Management Team (PMS) takes its investment decisions independent of the PCG research and accordingly PMS may have positions contrary to the PCG research recommendation. Kotak Securities Limited does not provide any promise or assurance of favourable view for a particular industry or sector or business group in any manner. The investor is requested to take into consideration all the risk factors including their financial condition, suitability to risk return profile and take professional advice before investing.

The analyst for this report certifies that all of the views expressed in this report accurately reflect his or her personal views about the subject company or companies and its or their securities, and no part of his or her compensation was, is or will be, directly or indirectly related to specific recommendations or views expressed in this report.

No part of this material may be duplicated in any form and/or redistributed without Kotak Securities' prior written consent. Details of Associates are available on www.kotak.com

1. Note that the research analysts contributing to the research report may not be associated persons of Kotak Mahindra Inc and therefore, may not be subject to NASD Rule 2711 restrictions on communications with a subject company, public appearances and trading securities held by a research analyst account.

2. Such research analysts may not be associated persons of Kotak Mahindra Inc and therefore, may not be subject to NASD Rule 2711 restrictions on communications with a subject company, public appearances and trading securities held by a research analyst account.

Any U.S. recipients of the research who wish to effect transactions in any security covered by the report should do so with or through Kotak Mahindra Inc. (Member FINRA/SIPC) and (ii) any transactions in the securities covered by the research by U.S. recipients must be effected only through Kotak Mahindra Inc. (Member FINRA/SIPC) at 369 Lexington Avenue 28th Floor NY NY 10017 USA (Tel:+1 212-600-8850).

Kotak Securities Limited and its non US affiliates may, to the extent permissible under applicable laws, have acted on or used this research to the extent that it relates to non US issuers, prior to or immediately following its publication. This material should not be construed as an offer to sell, or the solicitation of an offer to buy any security in any jurisdiction where such an offer or solicitation would be illegal. This research report and its respective content may be used for any securities or solicitation of any investments or investment services. Accordingly, any brokerage and investment services including the products and services described are not available to or intended for Canadian persons or US persons."

Research Analyst has served as an officer, director or employee of subject company(ies). No We or our associates may have received compensation from the subject company(ies) in the past 12 months.

We or our associates have managed or co-managed public offering of subject company(ies). No We or our associates may have received compensation for products or services other than investment banking or merchant banking or brokerage services from the subject company(ies) in the past 12 months. We or our associates may have received compensation or other benefits from the subject company(ies) or third party in connection with the research report. Our associates may have financial interest in the subject company(ies).

Research Analyst or his/her relative's financial interest in the subject company(ies): No Kotak Securities Limited has financial interest in the subject company(ies) at the end of the month immediately preceding the date of publication of Research Report: No

"However, Kotak Securities Prop/Arbitrage team could have exposure to the subject company/derivatives of the subject company/contracts in the ongoing month." Nature of financial interest is holding of equity shares or derivatives of the subject company.

Our associates may have actual/beneficial ownership of 1% or more securities of the subject company(ies) at the end of the month immediately preceding the date of publication of Research Report.

Research Analyst or his/her relatives has actual/beneficial ownership of 1% or more securities of the subject company(ies) at the end of the month immediately preceding the date of publication of Research Report: No.

Kotak Securities Limited has actual/beneficial ownership of 1% or more securities of the subject company(ies) at the end of the month immediately preceding the date of publication of Research Report: No

By referring to any particular sector, Kotak Securities Limited does not provide any promise or assurance of favourable view for a particular industry or sector or business group. The investor is requested to take into consideration all the risk factors including their financial condition, suitability to risk return profile and take professional advice before investing. Derivatives are a sophisticated investment vehicle. The investor is requested to take into consideration all the risk factors before actually trading derivatives.

Subject company(ies) may have been client during twelve months preceding the date of distribution of the research report. "A graph of daily closing prices of securities is available at <https://www.nseindia.com/ChartApp/call/charts/mainpage.js> and <http://economictimes.indiatimes.com/markets/stocks/stock-quotes>. (Choose a company from the list on the browser and select the "three years" icon in the pri

Our research should not be considered as an advertisement or advice, professional or otherwise. The investor is requested to take into consideration all the risk factors before investing. Investments in securities market are subject to market risks, read and take into consideration all the risk factors before investing. Compliance Officer Details: Mr. Sanjayu Nair. Call: 022-42858484, or Email: ks.compliance@kotak.com.

Kotak Securities Limited. Registered Office: 27 BKC, C 27, G Block, Bandra Kurla Complex, Bandra (E), Mumbai 400051. CIN: U99999MH1994PLC134051, Telephone No.: +22 43366111 Website: www.kotaksecurities.com. Correspondence Address: Infinity T Park, Bldg. No 2, Opp. Film City Road, A K Vaidya Marg, Malad (East), Mumbai 400020. Registration No: IN200200137(Member of NSE, BSE, MSE, MCX & NCDEX) AMFI ARN 1164, PMS INP000258 and Research Analyst INH000000586. NSDL/CDSL ID: N-DP-629-202: Mr. Sanjayu Nair Call: 022-42858484, or Email: ks.compliance@kotak.com

Details of Contact Person Address Contact Email

Customer care/ Client Servicing Mr. Tabrez Anwar Kotak Securities Ltd., 2nd Floor, Neptune El... s, Rc... 22, Indu... Estate, 180020 / serv... 180020 ks.es

Head of Customer care/ Client Servicing Mr. Hitesh Sindhwani Kotak Securities Ltd., 2nd Floor, Neptune El... s, Rc... 22, Indu... Estat... 022-42... 8 ks.se

Compliance Officer Mr. Sanjayu Nair Kotak Towers, 8th Floor, Building no.21, Infinity Park, Off Western Express Highway, Malad (East), Mumbai, Maharashtra - 400097. 022-42858484 ks.co

CEO Mr. Jaideep Hansraj Kotak Towers, 8th Floor, Building No.21, Infinity Park, Off Western Express Highway, Malad (East), Mumbai, Maharashtra - 400097. 022-42858301 ceo.k

F&O TRACKER

Samaj Adwani, Prashanth Laid, Prasenjit Biswas, CMT, CFTe, prasenjit.biswas@kotak.com

NIFTY DERIVATIVE SNAPSHOT FOR CURRENT SERIES

	NO OF SHARES OUTSTANDING	NO OF SHARES TRADED	VOLUME
CURRENT	17,654	1,05,83,750	97,43,800
PREVIOUS	17,588	1,06,13,250	1,07,58,900
% CHANGE	0.37%	-0.28%	-9.43%

OUTLOOK

Nifty
 Nifty opened positive and remained range bound through the day. Nifty added 36 points to close at 17558.

Stocks
 Activity witnessed in 17500PE and reduction in 17700CE. PCR OI stands at 1.50 compared to 1.53 in the previous trading session. Nifty to trade with a support of 17350.

Options
 Ob concentration seen in 18000CE and 16500PE.

PE
 Marketwide open interest is 885,974Cr.

Media
 Media stocks traded positive.

Options
 Nifty to trade with a support of 17350.

Options
 Ob concentration seen in 18000CE and 16500PE.

Options
 Marketwide open interest is 885,974Cr.

Options
 Media stocks traded positive.

Options
 Nifty to trade with a support of 17350.

Options
 Ob concentration seen in 18000CE and 16500PE.

Options
 Marketwide open interest is 885,974Cr.

Options
 Media stocks traded positive.

Options
 Nifty to trade with a support of 17350.

Options
 Ob concentration seen in 18000CE and 16500PE.

Options
 Marketwide open interest is 885,974Cr.

Options
 Media stocks traded positive.

Options
 Nifty to trade with a support of 17350.

Options
 Ob concentration seen in 18000CE and 16500PE.

Options
 Marketwide open interest is 885,974Cr.

Options
 Media stocks traded positive.

Options
 Nifty to trade with a support of 17350.

Options
 Ob concentration seen in 18000CE and 16500PE.

Options
 Marketwide open interest is 885,974Cr.

NIFTY OPTIONS OI

date **NIFTY PCR OI**

17-Aug-22 18-Aug-22 19-Aug-22

Millions

12 10 8 6 4 2 0

OI (LH)

17-Aug-22 18-Aug-22 19-Aug-22

17500 17600 17700 17800 17900 18000

Strike Price

022-42858301 ceo.k