

Sahaj Agrawal
sahaj.agrawal@kotak.com
+91 79 6607 2231

Malay Gandhi
malay.gandhi@kotak.com
+91 22 6218 6420

Prashanth Lalu
prashanth.lalu@kotak.com
+91 22 6218 5497

Prasenjit Biswas, CMT, CFTe
prasenjit.biswas@kotak.com
+91 33 6625 9810

NIFTY DERIVATIVE SNAPSHOT FOR CURRENT SERIES

	NIFTY FUTURE	OI (NO OF SHARES OUTSTANDING)	VOLUME (NO OF SHARES TRADED)	BASIS (Rs)	PCR OI	TREND
CURRENT	10,952	18,756,750	4,646,300	17.7	1.43	10500
PREVIOUS	10,938	18,274,350	5,415,400	25.5	1.42	
% CHANGE	0.13%	2.64%	-14.20%	-	-	

OUTLOOK

Nifty

- Nifty opened flat and traded in a small range through the day.
- Nifty added 22 points to close at 10934.
- OI concentration is seen at 11000CE and 10700PE.
- Activity witnessed in 11200 strike.
- PCR OI stands at 1.43 compared to 1.42 in the previous trading session.
- Nifty to trade with a support of 10500.

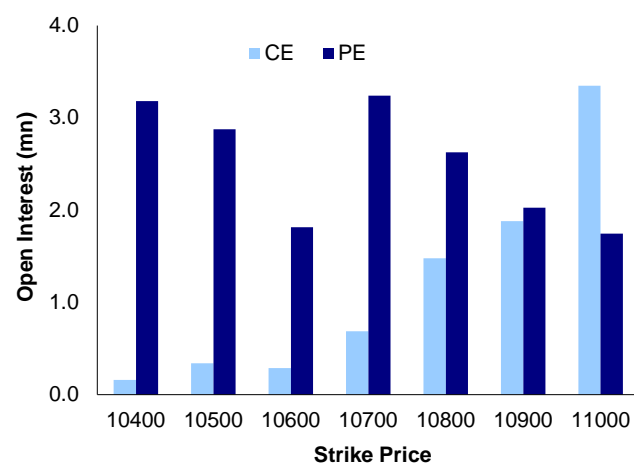
NIFTY LEVELS

10508 10669 10721 10863 10937 11029

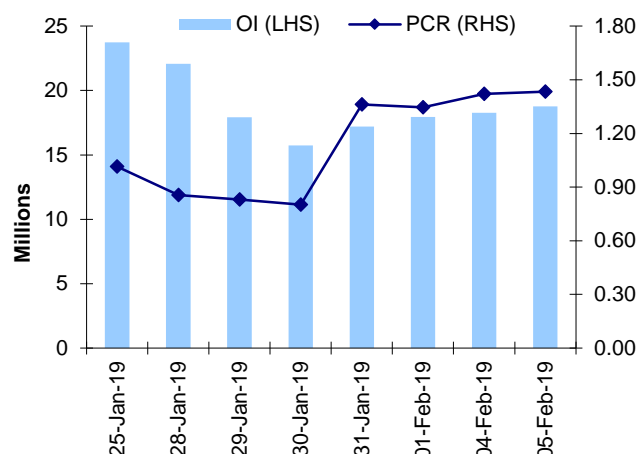
Stocks

- **Sector:-** Auto stocks traded positive.
- Market wide open interest is seen at 301,617Cr.

NIFTY OPTIONS OI



NIFTY PCR OI



FUTURE STATISTICS

OI INCREASE

SYMBOL	OI (%)	OI (SHARES)	PRICE CHG (%)
RPOWER	31.7%	68,048,000	-30.2%
IGL	17.3%	2,926,000	3.7%
PCJEWELLER	15.4%	9,048,000	-5.9%
ACC	14.5%	1,909,600	-1.2%
SRF	9.7%	832,000	2.8%
JUSTDIAL	9.1%	2,391,200	-2.4%
JETAIRWAYS	8.8%	7,156,600	-3.0%
POWERGRID	8.6%	9,232,000	0.8%
MARICO	8.2%	6,858,800	-1.2%

OI DECREASE

SYMBOL	OI (%)	OI (SHARES)	PRICE CHG (%)
SUZLON	-13.0%	237,424,000	-24.2%
RELCAPITAL	-11.2%	10,956,000	0.4%
EXIDEIND	-9.1%	7,744,000	-1.9%
CESC	-9.0%	909,150	1.5%
DHFL	-8.9%	21,679,500	5.9%
PETRONET	-7.3%	12,411,000	4.8%
BHEL	-7.0%	40,560,000	-9.4%
IDBI	-6.1%	30,940,000	-6.8%
SREINFRA	-5.8%	12,780,000	-10.5%

CASH STATISTICS

TOP VOLUMES

SYMBOL	TRADED SHARES (QTY)	VALUE (IN LAKHS)	CLOSE
RELIANCE	9,362,406	120,967	1,292
YESBANK	44,477,885	79,894	176
TITAN	7,144,200	75,397	1,067
AXISBANK	8,665,426	63,020	730
RELCAPITAL	40,395,079	60,833	152
PNB	70,132,820	52,342	73
MARUTI	681,498	48,111	7,094
DRREDDY	1,653,331	46,471	2,821
HDFCBANK	2,172,572	45,858	2,114

OPTION STATISTICS

SIGNIFICANT CALL OPEN INTEREST

SYMBOL	STRK PRICE	OPTION TYPE	CLOSE (RS)	FUT CLOSE	OI (SHARES)
SBIN	300	CE	4.3	285	11,391,000
BHEL	65	CE	0.7	58	4,582,500
BHEL	70	CE	0.3	58	4,147,500
BPCL	350	CE	4.5	327	437,400
HEROMOTOCO	2,900	CE	49.1	2,810	150,400
HEROMOTOCO	3,000	CE	24.7	2,810	144,800
HEROMOTOCO	2,700	CE	151.4	2,810	138,600
SBIN	310	CE	2.4	285	5,865,000
GAIL	330	CE	9.9	328	616,077
GAIL	350	CE	3.7	328	586,740

SIGNIFICANT PUT OPEN INTEREST

SYMBOL	STRK PRICE	OPTION TYPE	CLOSE (RS)	FUT CLOSE	OI (SHARES)
TCS	1,700	PE	2.2	2,055	1,022,250
HINDALCO	190	PE	2.6	206	2,208,500
ICICIBANK	350	PE	9.4	354	5,172,750
AXISBANK	640	PE	3.2	729	2,065,200
BHEL	50	PE	0.6	58	2,085,000
CIPLA	500	PE	17.0	508	378,000
BAJAJ-AUTO	3,000	PE	315.0	2,721	99,250
HEROMOTOCO	2,500	PE	11.1	2,810	87,600
INFY	620	PE	0.5	759	1,608,000
BPCL	310	PE	6.1	327	199,800

SIGNIFICANT OPEN INTEREST ADDITION

SYMBOL	STRK PRICE	OPTION TYPE	OPEN INT	OI CHG (%)	CLOSE (Rs)
RPOWER	15	CE	4,784,000	14850%	1.0
TATAGLOBAL	190	CE	245,250	5350%	5.8
JETAIRWAYS	390	CE	576,400	5140%	0.9
JETAIRWAYS	380	CE	534,600	4760%	1.3
JETAIRWAYS	410	CE	308,000	4567%	0.6
BHEL	60	CE	2,047,500	3800%	1.9
RPOWER	16	CE	2,048,000	3100%	0.8
BHEL	59	CE	390,000	2500%	2.2
JETAIRWAYS	370	CE	261,800	1883%	1.4
RELCAPITAL	140	CE	237,000	1875%	19.9

SIGNIFICANT PUT OPEN INTEREST ADDITION

SYMBOL	STRK PRICE	OPTION TYPE	OPEN INT	OI CHG (%)	CLOSE (Rs)
GMRINFRA	12	PE	2,880,000	6300%	0.3
BHARTIARTL	260	PE	227,800	4367%	1.8
IRB	120	PE	233,600	3550%	6.0
IRB	110	PE	105,600	3200%	2.9
JUSTDIAL	430	PE	155,400	2675%	6.8
BHEL	59	PE	150,000	1900%	3.1
TITAN	1,060	PE	231,000	1825%	28.9
TATAGLOBAL	180	PE	310,500	1625%	4.9
GMRINFRA	10	PE	1,395,000	1450%	0.1
BHEL	52	PE	397,500	1225%	0.8

CALL OPTION VOLUMES

SYMBOL	STRK PRICE	OPTION TYPE	CONTRACTS	CLOSE (Rs)
RELIANCE	1,300	CE	8,011	33.6
RELIANCE	1,320	CE	6,842	25.1
RELIANCE	1,340	CE	6,646	18.4
RELIANCE	1,360	CE	5,484	13.3
PNB	80	CE	5,201	1.6
TITAN	1,100	CE	3,785	18.9
RELIANCE	1,400	CE	3,736	6.9
YESBANK	200	CE	3,660	4.7
RELCAPITAL	160	CE	3,532	9.3
TATASTEEL	500	CE	3,352	5.4

PUT OPTION VOLUMES

SYMBOL	STRK PRICE	OPTION TYPE	CONTRACTS	CLOSE (Rs)
RELIANCE	1,260	PE	5,039	22.5
RELIANCE	1,280	PE	4,658	30.4
RELIANCE	1,240	PE	3,982	16.8
RELIANCE	1,200	PE	3,181	8.9
RELIANCE	1,220	PE	3,164	12.3
RELIANCE	1,300	PE	3,080	39.4
PNB	70	PE	3,009	2.1
JUBLFOOD	1,300	PE	2,588	59.9
ICICIBANK	350	PE	2,485	9.4
JUBLFOOD	1,200	PE	2,480	28.9

RATING SCALE

- BUY** – Stock/Index looks strong from the expiry/near term perspective and is expected to gain on the basis of technical and/or derivative parameters. Time frame is minimum of current expiry and in certain cases extend to the next series depending on the stock behaviour. Strict stop loss needs to be adhered to for every buy/long recommendation given.
- SELL** – Stock/Index looks weak from the expiry/near term perspective and is expected to gain on the basis of technical and/or derivative parameters. Time frame is minimum of current expiry and in certain cases extend to the next series depending on the stock behaviour. Strict stop loss needs to be adhered to for every sell/short recommendation given.

FUNDAMENTAL RESEARCH TEAM

Rusmik Oza Head of Research rusmik.oz@kotak.com +91 22 6218 6441	Arun Agarwal Auto & Auto Ancillary arun.agarwal@kotak.com +91 22 6218 6443	Amit Agarwal Transportation, Paints, FMCG agarwal.amit@kotak.com +91 22 6218 6439	Nipun Gupta Information Tech, Midcap nipun.gupta@kotak.com +91 22 6218 6433	Deval Shah Research Associate deval.shah@kotak.com +91 22 6218 6423
Sanjeev Zarbade Cap. Goods & Cons. Durables sanjeev.zarbade@kotak.com +91 22 6218 6424	Ruchir Khare Cap. Goods & Cons. Durables ruchir.khare@kotak.com +91 22 6218 6431	Jatin Damania Metals & Mining, Midcap jatin.damania@kotak.com +91 22 6218 6440	Cyndrella Carvalho Pharmaceuticals cyndrella.carvalho@kotak.com +91 22 6218 6426	Ledo Padinjarathala, CFA Research Associate ledo.padinjarathala@kotak.com +91 22 6218 7021
Teena Virmani Construction, Cement, Buildg Mat teena.virmani@kotak.com +91 22 6218 6432	Sumit Pokharna Oil and Gas, Information Tech sumit.pokharna@kotak.com +91 22 6218 6438	Pankaj Kumar Midcap pankajr.kumar@kotak.com +91 22 6218 6434	Krishna Nain M&A, Corporate actions krishna.nain@kotak.com +91 22 6218 7907	K. Kathirvelu Support Executive k.kathirvelu@kotak.com +91 22 6218 6427

TECHNICAL RESEARCH TEAM

Shrikant Chouhan shrikant.chouhan@kotak.com +91 22 6218 5408	Amol Athawale amol.athawale@kotak.com +91 20 6620 3350	Faisal Shaikh, CFTE Research Associate faisalf.shaikh@kotak.com +91 22 62185499	Siddhesh Jain Research Associate siddhesh.jain@kotak.com +91 22 62185498
---------------------------------------------------------------------------	---------------------------------------------------------------------	-------------------------------------------------------------------------------------------------	------------------------------------------------------------------------------------------

DERIVATIVES RESEARCH TEAM

Sahaj Agrawal sahaj.agrawal@kotak.com +91 79 6607 2231	Malay Gandhi malay.gandhi@kotak.com +91 22 6218 6420	Prashanth Lalu prashanth.lalu@kotak.com +91 22 6218 5497	Prasenjit Biswas, CMT, CFTE prasenjit.biswas@kotak.com +91 33 6625 9810
---------------------------------------------------------------------	-------------------------------------------------------------------	-----------------------------------------------------------------------	--------------------------------------------------------------------------------------

Disclosure/Disclaimer

Kotak Securities Limited established in 1994, is a subsidiary of Kotak Mahindra Bank Limited. Kotak Securities is one of India's largest brokerage and distribution house.

Kotak Securities Limited is a corporate trading and clearing member of Bombay Stock Exchange Limited (BSE), National Stock Exchange of India Limited (NSE), Metropolitan Stock Exchange of India Limited (MSE), National Commodity and Derivatives Exchange (NCDEX) and Multi Commodity Exchange (MCX). Our businesses include stock broking, services rendered in connection with distribution of primary market issues and financial products like mutual funds and fixed deposits, depository services and Portfolio Management.

Kotak Securities Limited is also a depository participant with National Securities Depository Limited (NSDL) and Central Depository Services (India) Limited (CDSL). Kotak Securities Limited is also registered with Insurance Regulatory and Development Authority as Corporate Agent for Kotak Mahindra Old Mutual Life Insurance Limited and is also a Mutual Fund Advisor registered with Association of Mutual Funds in India (AMFI). We are registered as a Research Analyst under SEBI (Research Analyst) Regulations, 2014.

We hereby declare that our activities were neither suspended nor we have defaulted with any stock exchange authority with whom we are registered in last five years. However SEBI, Exchanges and Depositories have conducted the routine inspection and based on their observations have issued advise/warning/deficiency letters/ or levied minor penalty on KSL for certain operational deviations. We have not been debarred from doing business by any Stock Exchange / SEBI or any other authorities; nor has our certificate of registration been cancelled by SEBI at any point of time.

We offer our research services to clients as well as our prospects.

This document is not for public distribution and has been furnished to you solely for your information and must not be reproduced or redistributed to any other person. Persons into whose possession this document may come are required to observe these restrictions.

This material is for the personal information of the authorized recipient, and we are not soliciting any action based upon it. This report is not to be construed as an offer to sell or the solicitation of an offer to buy any security in any jurisdiction where such an offer or solicitation would be illegal. It is for the general information of clients of Kotak Securities Ltd. It does not constitute a personal recommendation or take into account the particular investment objectives, financial situations, or needs of individual clients.

We have reviewed the report, and in so far as it includes current or historical information, it is believed to be reliable though its accuracy or completeness cannot be guaranteed. Neither Kotak Securities Limited, nor any person connected with it, accepts any liability arising from the use of this document. The recipients of this material should rely on their own investigations and take their own professional advice. Price and value of the investments referred to in this material may go up or down. Past performance is not a guide for future performance. Certain transactions - including those involving futures, options and other derivatives as well as non-investment grade securities - involve substantial risk and are not suitable for all investors. Reports based on technical analysis centers on studying charts of a stock's price movement and trading volume, as opposed to focusing on a company's fundamentals and as such, may not match with a report on a company's fundamentals.

Opinions expressed are our current opinions as of the date appearing on this material only. While we endeavor to update on a reasonable basis the information discussed in this material, there may be regulatory, compliance or other reasons that prevent us from doing so. Prospective investors and others are cautioned that any forward-looking statements are not predictions and may be subject to change without notice. Our proprietary trading and investment businesses may make investment decisions that are inconsistent with the recommendations expressed herein.

Kotak Securities Limited has two independent equity research groups: Institutional Equities and Private Client Group. This report has been prepared by the Private Client Group.

We and our affiliates/associates, officers, directors, and employees, Research Analyst(including relatives) worldwide may: (a) from time to time, have long or short positions in, and buy or sell the securities thereof, of company (ies) mentioned herein or (b) be engaged in any other transaction involving such securities and earn brokerage or other compensation or act as a market maker in the financial instruments of the subject company/company (ies) discussed herein or act as advisor or lender / borrower to such company (ies) or have other potential/material conflict of interest with respect to any recommendation and related information and opinions at the time of publication of Research Report or at the time of public appearance. Kotak Securities Limited (KSL) may have proprietary long/short position in the above mentioned scrip(s) and therefore may be considered as interested. The views provided herein are general in nature and does not consider risk appetite or investment objective of particular investor; readers are requested to take independent professional advice before investing. This should not be construed as invitation or solicitation to do business with KSL. Kotak Securities Limited is also a Portfolio Manager. Portfolio Management Team (PMS) takes its investment decisions independent of the PCG research and accordingly PMS may have positions contrary to the PCG research recommendation. Kotak Securities Limited does not provide any promise or assurance of favourable view for a particular industry or sector or business group in any manner. The investor is requested to take into consideration all the risk factors including their financial condition, suitability to risk return profile and take professional advice before investing.

The analyst for this report certifies that all of the views expressed in this report accurately reflect his or her personal views about the subject company or companies and its or their securities, and no part of his or her compensation was, is or will be, directly or indirectly related to specific recommendations or views expressed in this report.

No part of this material may be duplicated in any form and/or redistributed without Kotak Securities' prior written consent.

Details of Associates are available on www.kotak.com

1."Note that the research analysts contributing to the research report may not be registered/qualified as research analysts with FINRA; and

2. Such research analysts may not be associated persons of Kotak Mahindra Inc and therefore, may not be subject to NASD Rule 2711 restrictions on communications with a subject company, public appearances and trading securities held by a research analyst account

Any U.S. recipients of the research who wish to effect transactions in any security covered by the report should do so with or through Kotak Mahindra Inc. (Member FINRA/SIPC) and (ii) any transactions in the securities covered by the research by U.S. recipients must be effected only through Kotak Mahindra Inc. (Member FINRA/SIPC)at 369 Lexington Avenue 28th Floor NY NY 10017 USA (Tel:+1 212-600-8850).

Kotak Securities Limited and its non US affiliates may, to the extent permissible under applicable laws, have acted on or used this research to the extent that it relates to non US issuers, prior to or immediately following its publication. This material should not be construed as an offer to sell or the solicitation of an offer to buy any security in any jurisdiction where such an offer or solicitation would be illegal. This research report and its respective contents do not constitute an offer or invitation to purchase or subscribe for any securities or solicitation of any investments or investment services. Accordingly, any brokerage and investment services including the products and services described are not available to or intended for Canadian persons or US persons."

Research Analyst has served as an officer, director or employee of subject company(ies): No

We or our associates may have received compensation from the subject company(ies) in the past 12 months.

We or our associates have managed or co-managed public offering of securities for the subject company(ies) in the past 12 months: No

We or our associates may have received compensation for investment banking or merchant banking or brokerage services from the subject company(ies) in the past 12 months. We or our associates may have received any compensation for products or services other than investment banking or merchant banking or brokerage services from the subject company(ies) in the past 12 months. We or our associates may have received compensation or other benefits from the subject company(ies) or third party in connection with the research report. Our associates may have financial interest in the subject company(ies).

Research Analyst or his/her relative's financial interest in the subject company(ies): No

Kotak Securities Limited has financial interest in the subject company(ies) at the end of the month immediately preceding the date of publication of Research Report: No

Our associates may have actual/beneficial ownership of 1% or more securities of the subject company(ies) at the end of the month immediately preceding the date of publication of Research Report.

Research Analyst or his/her relatives has actual/beneficial ownership of 1% or more securities of the subject company(ies) at the end of the month immediately preceding the date of publication of Research Report: No

Kotak Securities Limited has actual/beneficial ownership of 1% or more securities of the subject company(ies) at the end of the month immediately preceding the date of publication of Research Report: No

Subject company(ies) may have been client during twelve months preceding the date of distribution of the research report.

"A graph of daily closing prices of securities is available at <https://www.nseindia.com/ChartApp/install/charts/mainpage.jsp> and <http://economictimes.indiatimes.com/markets/stocks/stock-quotes>. (Choose a company from the list on the browser and select the "three years" icon in the price chart)."

Kotak Securities Limited. Registered Office: 27 BKC, C 27, G Block, Bandra Kurla Complex, Bandra (E), Mumbai 400051. CIN: U99999MH1994PLC134051, Telephone No.: +22 43360000, Fax No.: +22 67132430. Website: www.kotak.com/www.kotaksecurities.com. Correspondence Address: Infinity IT Park, Bldg. No 21, Opp. Film City Road, A K Vaidya Marg, Malad (East), Mumbai 400097. Telephone No: 42856825. SEBI Registration No: INZ000200137 (Member of NSE, BSE, MSE, MCX & NCDEX), AMFI ARN 0164, PMS INP000000258 and Research Analyst INH000000586. NSDL/CDSL: IN-DP-NSDL-23-97. Our research should not be considered as an advertisement or advice, professional or otherwise. The investor is requested to take into consideration all the risk factors including their financial condition, suitability to risk return profile and the like and take professional advice before investing. Investments in securities market are subject to market risks, read all the related documents carefully before investing. Derivatives are a sophisticated investment device. The investor is requested to take into consideration all the risk factors before actually trading in derivative contracts. Compliance Officer Details: Mr. Manoj Agarwal. Call: 022 - 4285 8484, or Email: ks.compliance@kotak.com.

In case you require any clarification or have any concern, kindly write to us at below email ids:

- **Level 1:** For Trading related queries, contact our customer service at 'service.securities@kotak.com' and for demat account related queries contact us at ks.demat@kotak.com or call us on: Toll free numbers 18002099191 / 1860 266 9191
- **Level 2:** If you do not receive a satisfactory response at Level 1 within 3 working days, you may write to us at ks.escalation@kotak.com or call us on 022-42858445 and if you feel you are still unheard, write to our customer service HOD at ks.servicehead@kotak.com or call us on 022-42858208.
- **Level 3:** If you still have not received a satisfactory response at Level 2 within 3 working days, you may contact our Compliance Officer (Mr. Manoj Agarwal) at ks.compliance@kotak.com or call on 91 - (022) 4285 8484.
- **Level 4:** If you have not received a satisfactory response at Level 3 within 7 working days, you may also approach CEO (Mr. Kamlesh Rao) at ceo.ks@kotak.com or call on 91 - (022) 4285 8301.