

Sahaj Agrawal
sahaj.agrawal@kotak.com
+91 79 6607 2231

Malay Gandhi
malay.gandhi@kotak.com
+91 22 6218 6420

Prashanth Lal
prashanth.lalu@kotak.com
+91 22 6218 5497

Prasenjit Biswas, CMT, CFTe
prasenjit.biswas@kotak.com
+91 33 6625 9810

NIFTY DERIVATIVE SNAPSHOT FOR CURRENT SERIES

	NIFTY FUTURE	OI (NO OF SHARES OUTSTANDING)	VOLUME (NO OF SHARES TRADED)	BASIS (Rs)	PCR OI	TREND
CURRENT	10,857	14,261,625	6,799,250	51.25	1.34	10500
PREVIOUS	10,809	12,152,325	11,080,850	-25.55	0.96	
% CHANGE	0.44%	17.36%	-38.64%	-	-	

OUTLOOK

Nifty

- Nifty opened gap-up but failed to maintain its highs and closed negative.
- Nifty lost 14 point to close at 10792.
- OI concentration is seen at 11000CE and 10600PE.
- Addition witnessed in 11000CE and 10300PE.
- PCR OI stands at 1.34.
- Nifty to trade with a support of 10500.

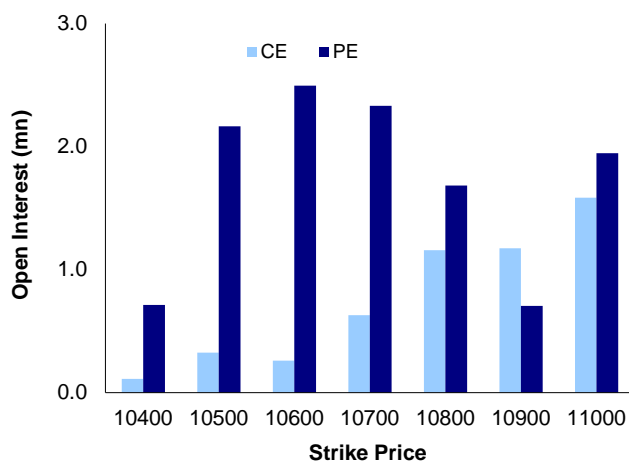
NIFTY LEVELS

Nifty Levels	10547	10618	10789	10848	10949	11150
--------------	-------	-------	-------	-------	-------	-------

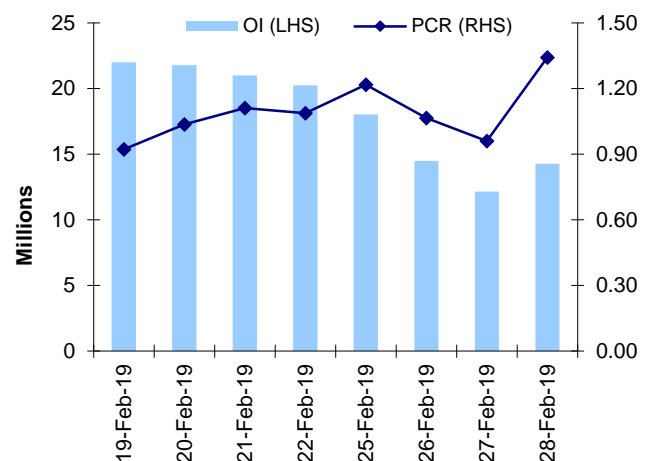
Stocks

- **Sector:-** Oil&Gas stocks traded positive.
- Market wide open interest is seen at 343,790Cr.

NIFTY OPTIONS OI



NIFTY PCR OI



FUTURE STATISTICS

OI INCREASE

SYMBOL	OI (%)	OI (SHARES)	PRICE CHG (%)
CANFINHOME	124.6%	4,201,200	2.1%
KAJARIACER	102.1%	1,844,700	0.5%
RPOWER	91.1%	67,936,000	2.4%
BHEL	78.7%	23,527,500	-0.8%
CESC	77.7%	1,172,600	0.7%
IOC	65.5%	33,691,000	2.6%
RELINFRA	64.6%	10,091,900	-4.1%
ESCORTS	64.5%	2,838,000	-0.9%
HDFC	61.7%	28,114,500	0.0%

OI DECREASE

SYMBOL	OI (%)	OI (SHARES)	PRICE CHG (%)
RCOM	-33.7%	6,290,000	0.0%

CASH STATISTICS

TOP VOLUMES

SYMBOL	TRADED SHARES (QTY)	VALUE (IN LAKHS)	CLOSE
AXISBANK	26,230,891	186,255	710
TCS	8,454,295	169,882	1,983
RELIANCE	11,286,916	139,176	1,231
LT	9,321,535	120,168	1,293
ITC	43,208,896	119,160	276
KOTAKBANK	8,722,836	106,027	1,213
YESBANK	45,753,501	105,377	231
HDFC	5,693,899	104,872	1,841
IOC	66,681,103	96,300	145

OPTION STATISTICS

SIGNIFICANT CALL OPEN INTEREST

SYMBOL	STRK PRICE	OPTION TYPE	CLOSE (RS)	FUT CLOSE	OI (SHARES)
BPCL	340	CE	11.4	338	252,000
HEROMOTOCO	2,800	CE	38.6	2,645	98,400
MARUTI	7,200	CE	93.5	6,878	115,050
YESBANK	270	CE	4.0	233	5,122,250
ICICIBANK	370	CE	3.9	352	3,492,500
BPCL	360	CE	4.6	338	223,200
KOTAKBANK	1,300	CE	9.9	1,222	532,800
BHEL	70	CE	0.9	65	855,000
SBIN	300	CE	1.5	271	2,262,000
YESBANK	240	CE	12.6	233	4,179,000

SIGNIFICANT PUT OPEN INTEREST

SYMBOL	STRK PRICE	OPTION TYPE	CLOSE (RS)	FUT CLOSE	OI (SHARES)
ICICIBANK	350	PE	10.4	352	4,424,750
ITC	260	PE	1.1	278	2,632,800
BAJAJ-AUTO	3,000	PE	139.0	2,907	85,250
BPCL	320	PE	5.4	338	208,800
KOTAKBANK	1,220	PE	33.4	1,222	492,000
BHEL	65	PE	2.7	65	817,500
DRREDDY	3,000	PE	325.6	2,649	127,000
SBIN	260	PE	4.7	271	1,692,000
INDUSINDBK	1,450	PE	29.9	1,480	176,700
YESBANK	200	PE	4.1	233	2,845,500

SIGNIFICANT OPEN INTEREST ADDITION

SYMBOL	STRK PRICE	OPTION TYPE	OPEN INT	OI CHG (%)	CLOSE (Rs)
RELINFRA	120	CE	208,000	5233%	13.5
NCC	92	CE	256,000	1500%	2.0
JISLJALEQS	55	CE	108,000	1100%	4.4
NHPC	25	CE	297,000	1000%	0.2
IDBI	50	CE	250,000	733%	0.5
NMDC	105	CE	504,000	664%	2.4
NMDC	102	CE	228,000	533%	3.1
RECLTD	155	CE	186,000	520%	0.6
NHPC	23	CE	162,000	500%	0.7
KTKBANK	120	CE	169,200	500%	1.9

SIGNIFICANT PUT OPEN INTEREST ADDITION

SYMBOL	STRK PRICE	OPTION TYPE	OPEN INT	OI CHG (%)	CLOSE (Rs)
L&TFH	180	PE	144,000	1500%	54.6
DLF	200	PE	117,000	1400%	35.8
IDEA	50	PE	168,000	1300%	20.5
NBCC	74	PE	112,000	1300%	20.8
IDBI	40	PE	130,000	1200%	1.0
BANKBARODA	120	PE	1,240,000	1048%	18.3
IDEA	33	PE	408,000	1033%	4.1
KTKBANK	130	PE	192,700	925%	17.1
RECLTD	127	PE	180,000	900%	2.0
YESBANK	280	PE	129,500	825%	50.0

CALL OPTION VOLUMES

SYMBOL	STRK PRICE	OPTION TYPE	CONTRACTS	CLOSE (Rs)
RELIANCE	1,240	CE	21,718	0.3
YESBANK	235	CE	19,518	0.1
YESBANK	230	CE	18,419	0.9
MARUTI	7,000	CE	10,638	0.4
YESBANK	240	CE	9,893	0.1
SBIN	270	CE	9,208	0.2
TCS	2,020	CE	8,619	0.2
ASHOKLEY	87	CE	7,263	0.1
TCS	2,000	CE	7,144	0.3
TATAMOTORS	180	CE	7,105	0.2

PUT OPTION VOLUMES

SYMBOL	STRK PRICE	OPTION TYPE	CONTRACTS	CLOSE (Rs)
TCS	2,000	PE	13,856	16.1
TCS	1,980	PE	11,018	1.0
RELIANCE	1,220	PE	10,265	0.1
TATASTEEL	500	PE	8,360	0.2
YESBANK	230	PE	6,877	0.3
RELIANCE	1,240	PE	6,611	8.8
TCS	2,020	PE	5,874	36.3
RELIANCE	1,200	PE	5,819	0.1
MARUTI	6,900	PE	5,586	46.5
YESBANK	225	PE	5,159	0.1

RATING SCALE

- BUY** – Stock/Index looks strong from the expiry/near term perspective and is expected to gain on the basis of technical and/or derivative parameters. Time frame is minimum of current expiry and in certain cases extend to the next series depending on the stock behaviour. Strict stop loss needs to be adhered to for every buy/long recommendation given.
- SELL** – Stock/Index looks weak from the expiry/near term perspective and is expected to gain on the basis of technical and/or derivative parameters. Time frame is minimum of current expiry and in certain cases extend to the next series depending on the stock behaviour. Strict stop loss needs to be adhered to for every sell/short recommendation given.

FUNDAMENTAL RESEARCH TEAM

Rusmik Oza Head of Research rusmik.ozakotak.com +91 22 6218 6441	Arun Agarwal Auto & Auto Ancillary arun.agarwal@kotak.com +91 22 6218 6443	Amit Agarwal Transportation, Paints, FMCG agarwal.amit@kotak.com +91 22 6218 6439	Nipun Gupta Information Tech, Midcap nipun.gupta@kotak.com +91 22 6218 6433	Deval Shah Research Associate deval.shah@kotak.com +91 22 6218 6423
Sanjeev Zarbade Cap. Goods & Cons. Durables sanjeev.zarbade@kotak.com +91 22 6218 6424	Ruchir Khare Cap. Goods & Cons. Durables ruchir.khare@kotak.com +91 22 6218 6431	Jatin Damania Metals & Mining, Midcap jatin.damania@kotak.com +91 22 6218 6440	Cyndrella Carvalho Pharmaceuticals cyndrella.carvalho@kotak.com +91 22 6218 6426	Ledo Padinjarathala, CFA Research Associate ledo.padinjarathala@kotak.com +91 22 6218 7021
Teena Virmani Construction, Cement, Buildg Mat teena.virmani@kotak.com +91 22 6218 6432	Sumit Pokharna Oil and Gas, Information Tech sumit.pokharna@kotak.com +91 22 6218 6438	Pankaj Kumar Midcap pankajr.kumar@kotak.com +91 22 6218 6434	Krishna Nain M&A, Corporate actions krishna.nain@kotak.com +91 22 6218 7907	K. Kathirvelu Support Executive k.kathirvelu@kotak.com +91 22 6218 6427

TECHNICAL RESEARCH TEAM

Shrikant Chouhan shrikant.chouhan@kotak.com +91 22 6218 5408	Amol Athawale amol.athawale@kotak.com +91 20 6620 3350	Faisal Shaikh, CFTe Research Associate faisalf.shaikh@kotak.com +91 22 62185499	Siddhesh Jain Research Associate siddhesh.jain@kotak.com +91 22 62185498
---	---	---	--

DERIVATIVES RESEARCH TEAM

Sahaj Agrawal sahaj.agrawal@kotak.com +91 79 6607 2231	Malay Gandhi malay.gandhi@kotak.com +91 22 6218 6420	Prashanth Lalu prashanth.lalu@kotak.com +91 22 6218 5497	Prasenjit Biswas, CMT, CFTe prasenjit.biswas@kotak.com +91 33 6625 9810
---	---	---	--

Disclosure/Disclaimer

Kotak Securities Limited established in 1994, is a subsidiary of Kotak Mahindra Bank Limited. Kotak Securities is one of India's largest brokerage and distribution house.

Kotak Securities Limited is a corporate trading and clearing member of Bombay Stock Exchange Limited (BSE), National Stock Exchange of India Limited (NSE), Metropolitan Stock Exchange of India Limited (MSE), National Commodity and Derivatives Exchange (NCDEX) and Multi Commodity Exchange (MCX). Our businesses include stock broking, services rendered in connection with distribution of primary market issues and financial products like mutual funds and fixed deposits, depository services and Portfolio Management.

Kotak Securities Limited is also a depository participant with National Securities Depository Limited (NSDL) and Central Depository Services (India) Limited (CDSL). Kotak Securities Limited is also registered with Insurance Regulatory and Development Authority as Corporate Agent for Kotak Mahindra Old Mutual Life Insurance Limited and is also a Mutual Fund Advisor registered with Association of Mutual Funds in India (AMFI). We are registered as a Research Analyst under SEBI (Research Analyst) Regulations, 2014.

We hereby declare that our activities were neither suspended nor we have defaulted with any stock exchange authority with whom we are registered in last five years. However SEBI, Exchanges and Depositories have conducted the routine inspection and based on their observations have issued advise/warning/deficiency letters/ or levied minor penalty on KSL for certain operational deviations. We have not been debarred from doing business by any Stock Exchange / SEBI or any other authorities; nor has our certificate of registration been cancelled by SEBI at any point of time.

We offer our research services to clients as well as our prospects.

This document is not for public distribution and has been furnished to you solely for your information and must not be reproduced or redistributed to any other person. Persons into whose possession this document may come are required to observe these restrictions.

This material is for the personal information of the authorized recipient, and we are not soliciting any action based upon it. This report is not to be construed as an offer to sell or the solicitation of an offer to buy any security in any jurisdiction where such an offer or solicitation would be illegal. It is for the general information of clients of Kotak Securities Ltd. It does not constitute a personal recommendation or take into account the particular investment objectives, financial situations, or needs of individual clients.

We have reviewed the report, and in so far as it includes current or historical information, it is believed to be reliable though its accuracy or completeness cannot be guaranteed. Neither Kotak Securities Limited, nor any person connected with it, accepts any liability arising from the use of this document. The recipients of this material should rely on their own investigations and take their own professional advice. Price and value of the investments referred to in this material may go up or down. Past performance is not a guide for future performance. Certain transactions - including those involving futures, options and other derivatives as well as non-investment grade securities - involve substantial risk and are not suitable for all investors. Reports based on technical analysis centers on studying charts of a stock's price movement and trading volume, as opposed to focusing on a company's fundamentals and as such, may not match with a report on a company's fundamentals.

Opinions expressed are our current opinions as of the date appearing on this material only. While we endeavor to update on a reasonable basis the information discussed in this material, there may be regulatory, compliance or other reasons that prevent us from doing so. Prospective investors and others are cautioned that any forward-looking statements are not predictions and may be subject to change without notice. Our proprietary trading and investment businesses may make investment decisions that are inconsistent with the recommendations expressed herein.

Kotak Securities Limited has two independent equity research groups: Institutional Equities and Private Client Group. This report has been prepared by the Private Client Group.

We and our affiliates/associates, officers, directors, and employees, Research Analyst(including relatives) worldwide may: (a) from time to time, have long or short positions in, and buy or sell the securities thereof, of company (ies) mentioned herein or (b) be engaged in any other transaction involving such securities and earn brokerage or other compensation or act as a market maker in the financial instruments of the subject company/company (ies) discussed herein or act as advisor or lender / borrower to such company (ies) or have other potential/material conflict of interest with respect to any recommendation and related information and opinions at the time of publication of Research Report or at the time of public appearance. Kotak Securities Limited (KSL) may have proprietary long/short position in the above mentioned scrip(s) and therefore may be considered as interested. The views provided herein are general in nature and does not consider risk appetite or investment objective of particular investor; readers are requested to take independent professional advice before investing. This should not be construed as invitation or solicitation to do business with KSL. Kotak Securities Limited is also a Portfolio Manager. Portfolio Management Team (PMS) takes its investment decisions independent of the PCG research and accordingly PMS may have positions contrary to the PCG research recommendation. Kotak Securities Limited does not provide any promise or assurance of favourable view for a particular industry or sector or business group in any manner. The investor is requested to take into consideration all the risk factors including their financial condition, suitability to risk return profile and take professional advice before investing.

The analyst for this report certifies that all of the views expressed in this report accurately reflect his or her personal views about the subject company or companies and its or their securities, and no part of his or her compensation was, is or will be, directly or indirectly related to specific recommendations or views expressed in this report.

No part of this material may be duplicated in any form and/or redistributed without Kotak Securities' prior written consent.

Details of Associates are available on www.kotak.com

1."Note that the research analysts contributing to the research report may not be registered/qualified as research analysts with FINRA; and

2. Such research analysts may not be associated persons of Kotak Mahindra Inc and therefore, may not be subject to NASD Rule 2711 restrictions on communications with a subject company, public appearances and trading securities held by a research analyst account

Any U.S. recipients of the research who wish to effect transactions in any security covered by the report should do so with or through Kotak Mahindra Inc. (Member FINRA/SIPC) and (ii) any transactions in the securities covered by the research by U.S. recipients must be effected only through Kotak Mahindra Inc. (Member FINRA/SIPC)at 369 Lexington Avenue 28th Floor NY NY 10017 USA (Tel:+1 212-600-8850).

Kotak Securities Limited and its non US affiliates may, to the extent permissible under applicable laws, have acted on or used this research to the extent that it relates to non US issuers, prior to or immediately following its publication. This material should not be construed as an offer to sell or the solicitation of an offer to buy any security in any jurisdiction where such an offer or solicitation would be illegal. This research report and its respective contents do not constitute an offer or invitation to purchase or subscribe for any securities or solicitation of any investments or investment services. Accordingly, any brokerage and investment services including the products and services described are not available to or intended for Canadian persons or US persons."

Research Analyst has served as an officer, director or employee of subject company(ies): No

We or our associates may have received compensation from the subject company(ies) in the past 12 months.

We or our associates have managed or co-managed public offering of securities for the subject company(ies) in the past 12 months: No

We or our associates may have received compensation for investment banking or merchant banking or brokerage services from the subject company(ies) in the past 12 months. We or our associates may have received any compensation for products or services other than investment banking or merchant banking or brokerage services from the subject company(ies) in the past 12 months. We or our associates may have received compensation or other benefits from the subject company(ies) or third party in connection with the research report. Our associates may have financial interest in the subject company(ies).

Research Analyst or his/her relative's financial interest in the subject company(ies): No

Kotak Securities Limited has financial interest in the subject company(ies) at the end of the month immediately preceding the date of publication of Research Report: No

Our associates may have actual/beneficial ownership of 1% or more securities of the subject company(ies) at the end of the month immediately preceding the date of publication of Research Report.

Research Analyst or his/her relatives has actual/beneficial ownership of 1% or more securities of the subject company(ies) at the end of the month immediately preceding the date of publication of Research Report: No

Kotak Securities Limited has actual/beneficial ownership of 1% or more securities of the subject company(ies) at the end of the month immediately preceding the date of publication of Research Report: No

Subject company(ies) may have been client during twelve months preceding the date of distribution of the research report.

"A graph of daily closing prices of securities is available at <https://www.nseindia.com/ChartApp/install/charts/mainpage.jsp> and <http://economictimes.indiatimes.com/markets/stocks/stock-quotes>. (Choose a company from the list on the browser and select the "three years" icon in the price chart)."

Kotak Securities Limited. Registered Office: 27 BKC, C 27, G Block, Bandra Kurla Complex, Bandra (E), Mumbai 400051. CIN: U99999MH1994PLC134051, Telephone No.: +22 43360000, Fax No.: +22 67132430. Website: www.kotak.com/www.kotaksecurities.com. Correspondence Address: Infinity IT Park, Bldg. No 21, Opp. Film City Road, A K Vaidya Marg, Malad (East), Mumbai 400097. Telephone No: 42856825. SEBI Registration No: INZ000200137 (Member of NSE, BSE, MSE, MCX & NCDEX), AMFI ARN 0164, PMS INP000000258 and Research Analyst INH000000586. NSDL/CDSL: IN-DP-NSDL-23-97. Our research should not be considered as an advertisement or advice, professional or otherwise. The investor is requested to take into consideration all the risk factors including their financial condition, suitability to risk return profile and the like and take professional advice before investing. Investments in securities market are subject to market risks, read all the related documents carefully before investing. Derivatives are a sophisticated investment device. The investor is requested to take into consideration all the risk factors before actually trading in derivative contracts. Compliance Officer Details: Mr. Manoj Agarwal. Call: 022 - 4285 8484, or Email: ks.compliance@kotak.com.

In case you require any clarification or have any concern, kindly write to us at below email ids:

- **Level 1:** For Trading related queries, contact our customer service at 'service.securities@kotak.com' and for demat account related queries contact us at ks.demat@kotak.com or call us on: Toll free numbers 18002099191 / 1860 266 9191
- **Level 2:** If you do not receive a satisfactory response at Level 1 within 3 working days, you may write to us at ks.escalation@kotak.com or call us on 022-42858445 and if you feel you are still unheard, write to our customer service HOD at ks.servicehead@kotak.com or call us on 022-42858208.
- **Level 3:** If you still have not received a satisfactory response at Level 2 within 3 working days, you may contact our Compliance Officer (Mr. Manoj Agarwal) at ks.compliance@kotak.com or call on 91 - (022) 4285 8484.
- **Level 4:** If you have not received a satisfactory response at Level 3 within 7 working days, you may also approach CEO (Mr. Kamlesh Rao) at ceo.ks@kotak.com or call on 91 - (022) 4285 8301.