

Shrikant Chouhan

shrikant.chouhan@kotak.com

+91 22 6621 6360

INDEX RANGE**NIFTY : 5304**

Range : 5265-5335

Resistance : 5335-5375-5390-5440

Support : 5265-5220-5200-5180

SENSEX : 17694

Range : 17530-17780

Resistance : 17780-17820-17870-17995

Support : 17660-17530-17390-17335

BANK NIFTY : 9813

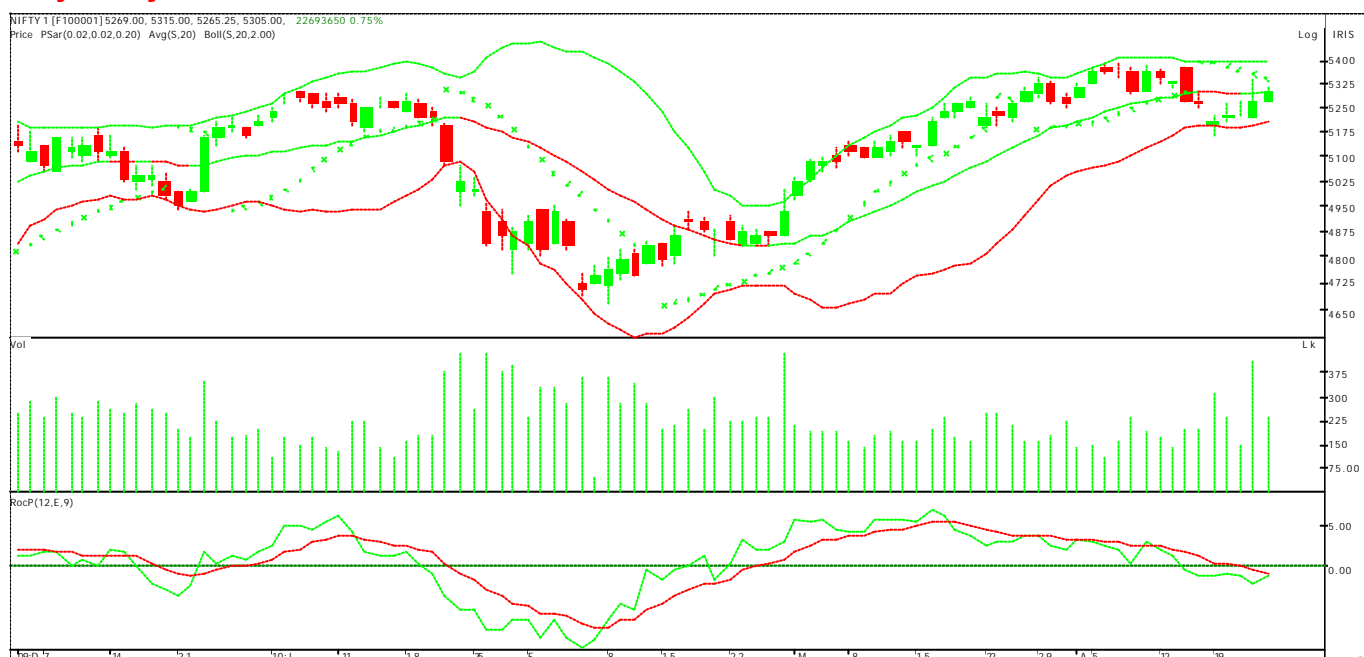
Range : 9770-9885

Resistance : 9885-9925-9960-10020

Support : 9770-9690-9660-9585

To follow, without halt, one aim: There's the secret of success.

Short Term Trend: **Down (Down below 5350/17900)**; Medium Term Trend: **Down (Down below 5230/16470)**;
Long Term Trend: **Up**

Nifty - Daily**The week past and expected**

Even though there was sell off in the market on last Monday the market remained in a recovery mode through out the week. However, such recoveries are nothing but pull back to the bear rally between 5400 and 5160 levels. The medium term trend of the market is "down to negative" and may reverse only if the market dismisses the previous highest level 5400/18050.

As per weekly pattern last week's highest and lowest levels may act as a prudent support and resistance for the market (5335/17780 and 5160/17270). For traders these levels are important to note as on the sustenance of the market above and below these levels may move the market sharply towards the same direction. On the higher side we may expect 5400/5440 (18150) above 5335 and on the lower side the chances of hitting 5000/16850 may increase below the level 5160/17270

For the day 5265/17530 may act as a major support any sustenance below the same may push the indices to multi support area 5200/5180 (17390/17330). On the higher side 5310/5335 levels may act as a hurdle area to cross these levels the market requires genuine strength index based stocks.

In the last week there was "out performance from banking side" and "under performance from metal side". In the current week also we may expect the same and buying on declines is advisable in bank stocks where as selling is advisable on rally in metal stocks. The auto and tech index may improve from lower levels. The capital good and infra stocks are still into bullish consolidation zone and buying at proper support levels will yield better returns for investors in the medium term.

Research Team

Dipen Shah

IT, Media
dipen.shah@kotak.com
+91 22 6621 6301

Sanjeev Zarbade

Capital Goods, Engineering
sanjeev.zarbade@kotak.com
+91 22 6621 6305

Teena Virmani

Construction, Cement, Mid Cap
teena.virmani@kotak.com
+91 22 6621 6302

Apurva Doshi

Logistics, Textiles, Mid Cap
doshi.apurva@kotak.com
+91 22 6621 6308

Saurabh Gurnurkar

Media, IT
saurabh.gurnurkar@kotak.com
+91 22 6621 6310

Saurabh Agrawal

Metals, Mining
agrawal.saurabh@kotak.com
+91 22 6621 6309

Saday Sinha

Banking, Economy
saday.sinha@kotak.com
+91 22 6621 6312

Sarika Lohra

NBFCs
sarika.lohra@kotak.com
+91 22 6621 6313

Arun Agarwal

Automobiles
arun.agarwal@kotak.com
+91 22 6621 6143

Jayesh Kumar

Economy
kumar.jayesh@kotak.com
+91 22 6652 9172

Shrikant Chouhan

Technical analyst
shrikant.chouhan@kotak.com
+91 22 6621 6360

K. Kathirvelu

Production
k.kathirvelu@kotak.com
+91 22 6621 6311

Disclaimer

This document is not for public distribution and has been furnished to you solely for your information and must not be reproduced or redistributed to any other person. Persons into whose possession this document may come are required to observe these restrictions.

This material is for the personal information of the authorized recipient, and we are not soliciting any action based upon it. This report is not to be construed as an offer to sell or the solicitation of an offer to buy any security in any jurisdiction where such an offer or solicitation would be illegal. It is for the general information of clients of Kotak Securities Ltd. It does not constitute a personal recommendation or take into account the particular investment objectives, financial situations, or needs of individual clients.

We have reviewed the report, and in so far as it includes current or historical information, it is believed to be reliable though its accuracy or completeness cannot be guaranteed. Neither Kotak Securities Limited, nor any person connected with it, accepts any liability arising from the use of this document. The recipients of this material should rely on their own investigations and take their own professional advice. Price and value of the investments referred to in this material may go up or down. Past performance is not a guide for future performance. Certain transactions - including those involving futures, options and other derivatives as well as non-investment grade securities - involve substantial risk and are not suitable for all investors. Reports based on technical analysis centers on studying charts of a stock's price movement and trading volume, as opposed to focusing on a company's fundamentals and as such, may not match with a report on a company's fundamentals.

Opinions expressed are our current opinions as of the date appearing on this material only. While we endeavor to update on a reasonable basis the information discussed in this material, there may be regulatory, compliance, or other reasons that prevent us from doing so. Prospective investors and others are cautioned that any forward-looking statements are not predictions and may be subject to change without notice. Our proprietary trading and investment businesses may make investment decisions that are inconsistent with the recommendations expressed herein.

Kotak Securities Limited has two independent equity research groups: Institutional Equities and Private Client Group. This report has been prepared by the Private Client Group. The views and opinions expressed in this document may or may not match or may be contrary with the views, estimates, rating, target price of the Institutional Equities Research Group of Kotak Securities Limited.

We and our affiliates, officers, directors, and employees world wide may: (a) from time to time, have long or short positions in, and buy or sell the securities thereof, of company (ies) mentioned herein or (b) be engaged in any other transaction involving such securities and earn brokerage or other compensation or act as a market maker in the financial instruments of the company (ies) discussed herein or act as advisor or lender / borrower to such company (ies) or have other potential conflict of interest with respect to any recommendation and related information and opinions.

The analyst for this report certifies that all of the views expressed in this report accurately reflect his or her personal views about the subject company or companies and its or their securities, and no part of his or her compensation was, is or will be, directly or indirectly related to specific recommendations or views expressed in this report.

No part of this material may be duplicated in any form and/or redistributed without Kotak Securities' prior written consent.
