

TATATEL~EQ	NSE	833.48	11	838.00	7
TIMETECHNO~EQ	NSE	43.20	100	43.50	99
BBL~EQ	NSE	805.85	3	807.95	8
STER~EQ	NSE	624.65	10	624.95	15
RELIGARE~EQ	NSE	383.00	185	384.00	49
GVKPIL~EQ	NSE	45.80	22461	45.85	4518
BHARTIARTL~EQ	NSE	40.15	74	400.30	365
NIITLTD~EQ	NSE	67.50	7338	67.55	63
TATACOMM~EQ	NSE	496.80	17	496.95	209
PANTALDON~EQ	NSE	296.10	10	296.75	51
TATAPOWER~EQ	NSE	1277.59	85	1277.5	20
IDBI~EQ	NSE	96.20	643	96.30	1488
GVKPIL~EQ	NSE	99.80	3904	99.85	50
SUVEN~EQ	NSE	22.25	546	22.30	163
VIJAYABANK~EQ	NSE	41.25	1001	41.30	2184
GTLINFRA~EQ	NSE	36.90	13669	36.95	4849
TTML~EQ	NSE	33.10	609	33.15	26258
PNB~EQ	NSE	669.50	70	669.60	2
PNB~EQ	NSE	669.50	70	669.60	2

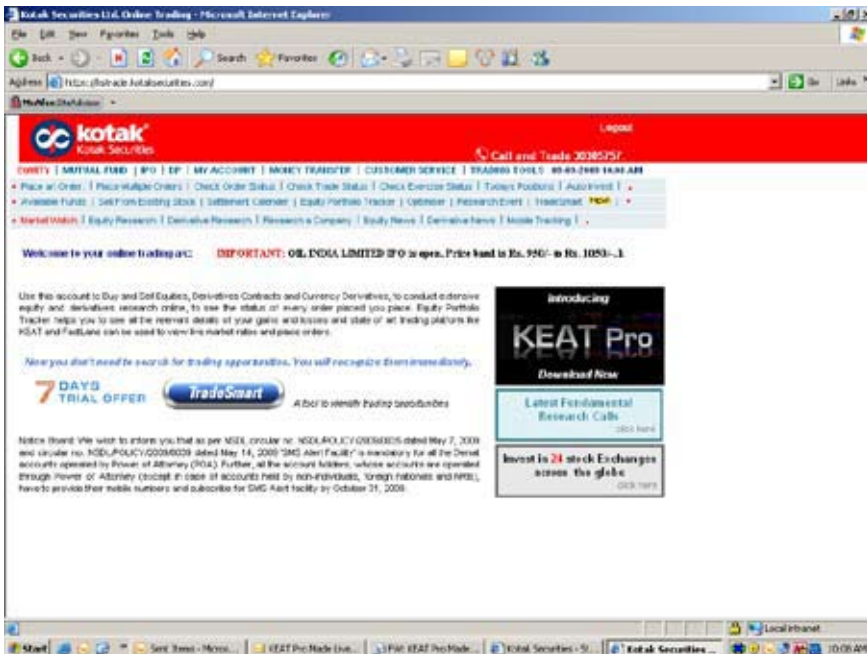
Installation guide

Downloading & Installing KEAT Pro

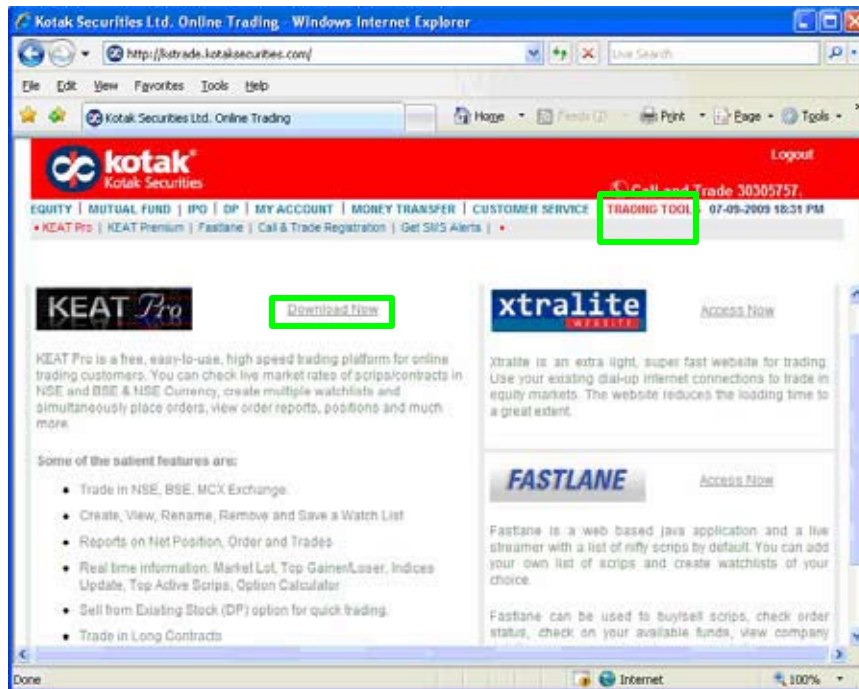
1. Access the Kotak securities trading website (<https://kstrade.kotaksecurities.com>). The Login screen appears:



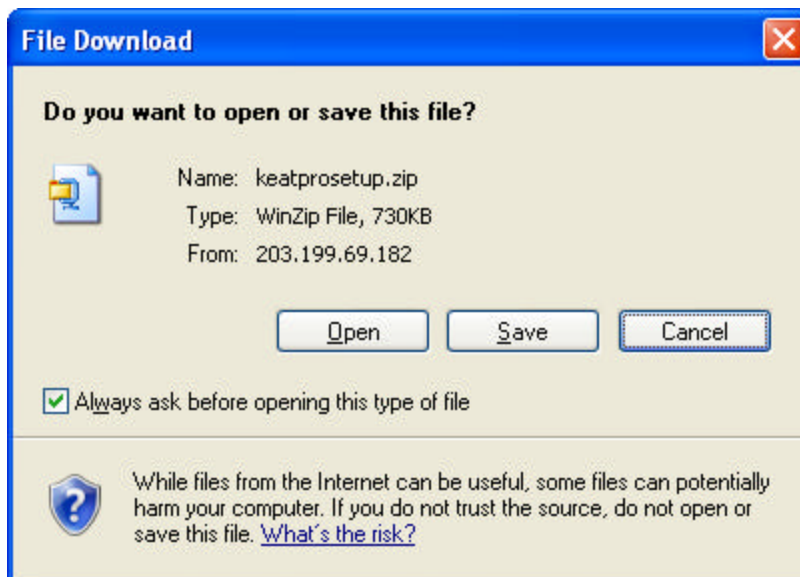
2. Enter valid User Id, Password, Security Key. Click LOGIN. The Welcome screen appears.



3. Locate and click the TRADING TOOL Slink.



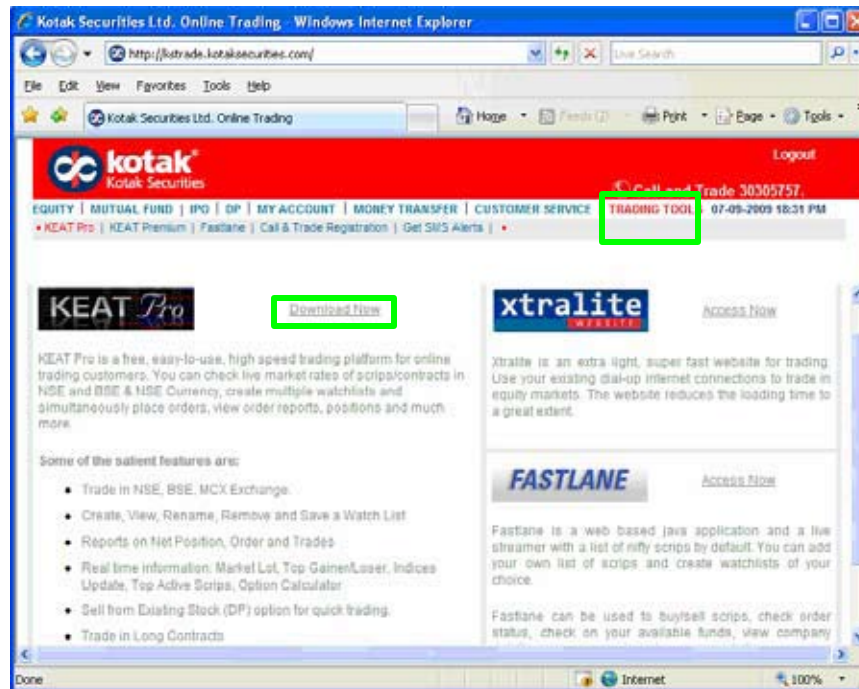
4. From the KEAT Pro section, click the Download Now link. The File Download dialog box appears:



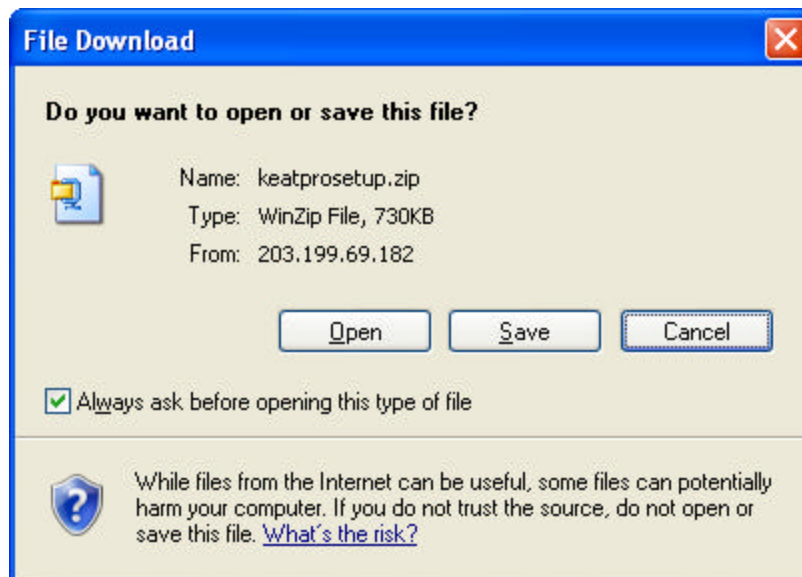
5. Click Save.

6. Browse the destination path to save the zipped exe file.

3. Locate and click the TRADING TOOLS link.

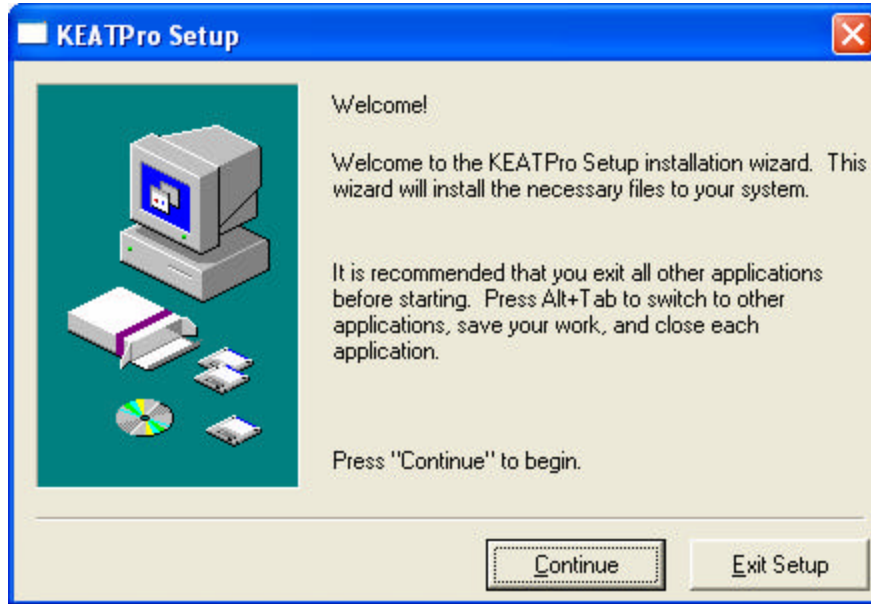


4. From the KEAT Pro section, click the Download Now link. The File Download dialog box appears:

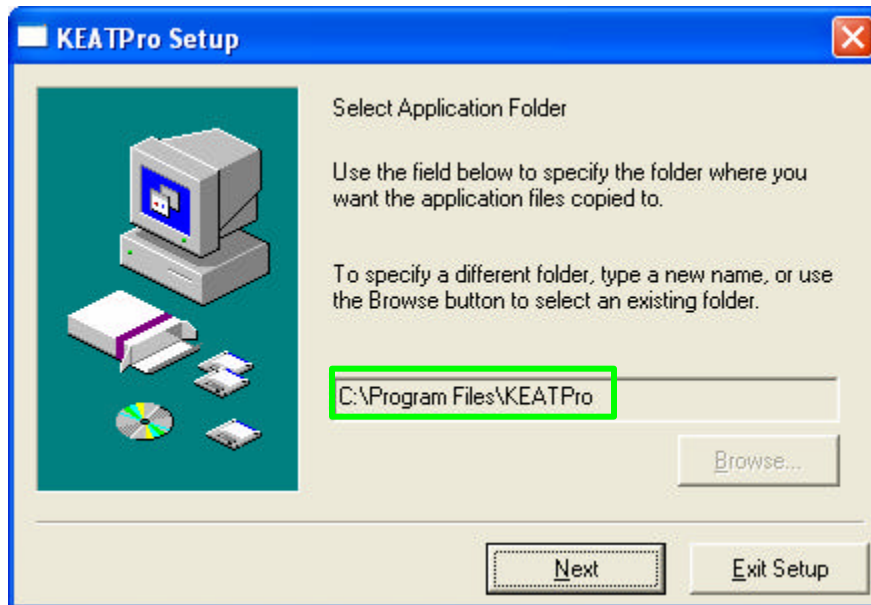


5. Click Save.

6. Browse the destination path to save the zipped exe file.



10. Click NEXT.

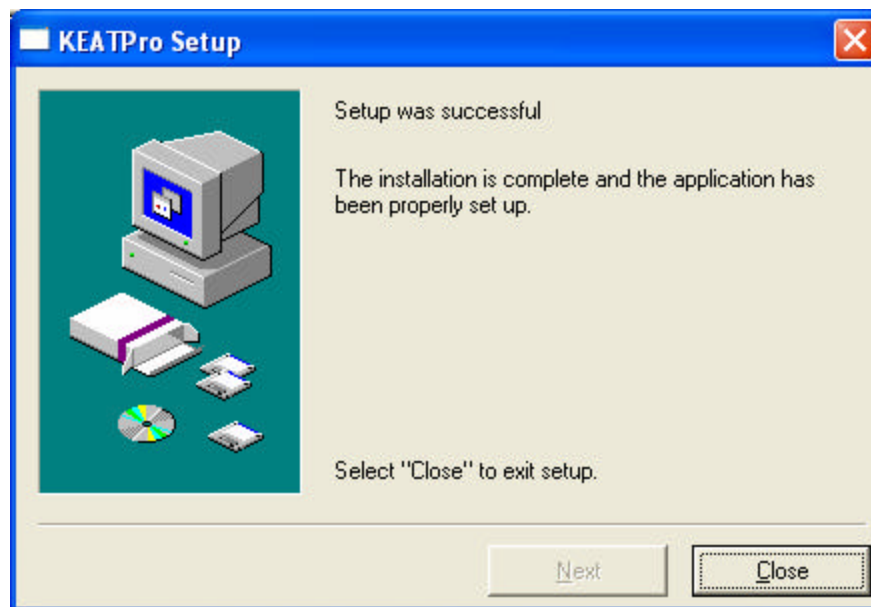


NOTE: Kindly, don't change the default installation path.

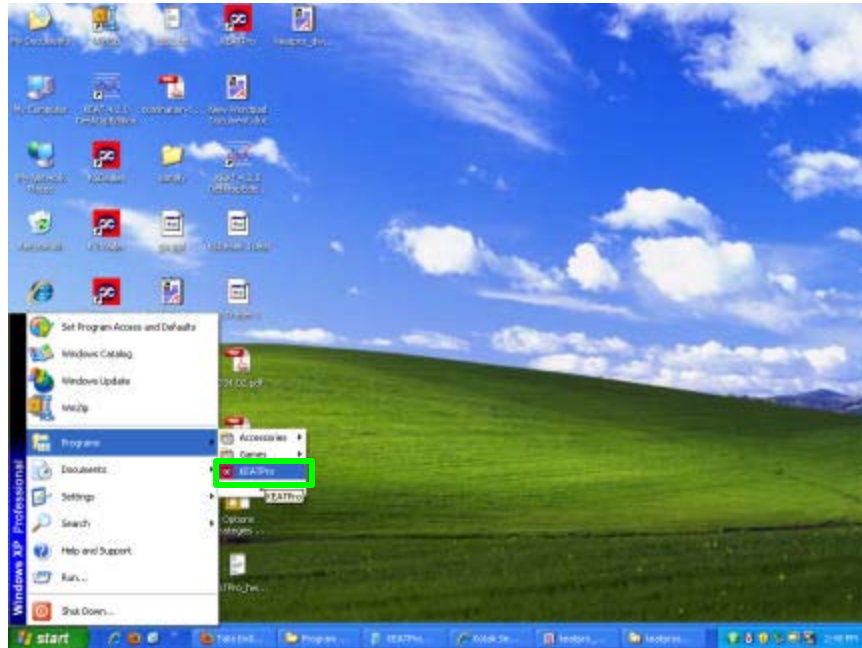
11. Click Yes. Installation process will proceed.



12. Click Close. The installation process is completed.



NOTE: The KEAT Pro startup icon is automatically created at Start? Programs? KEAT Pro as shown:



13. Click the KEAT Pro icon, The KEAT Pro Login dialog box appears and is ready for trading.

